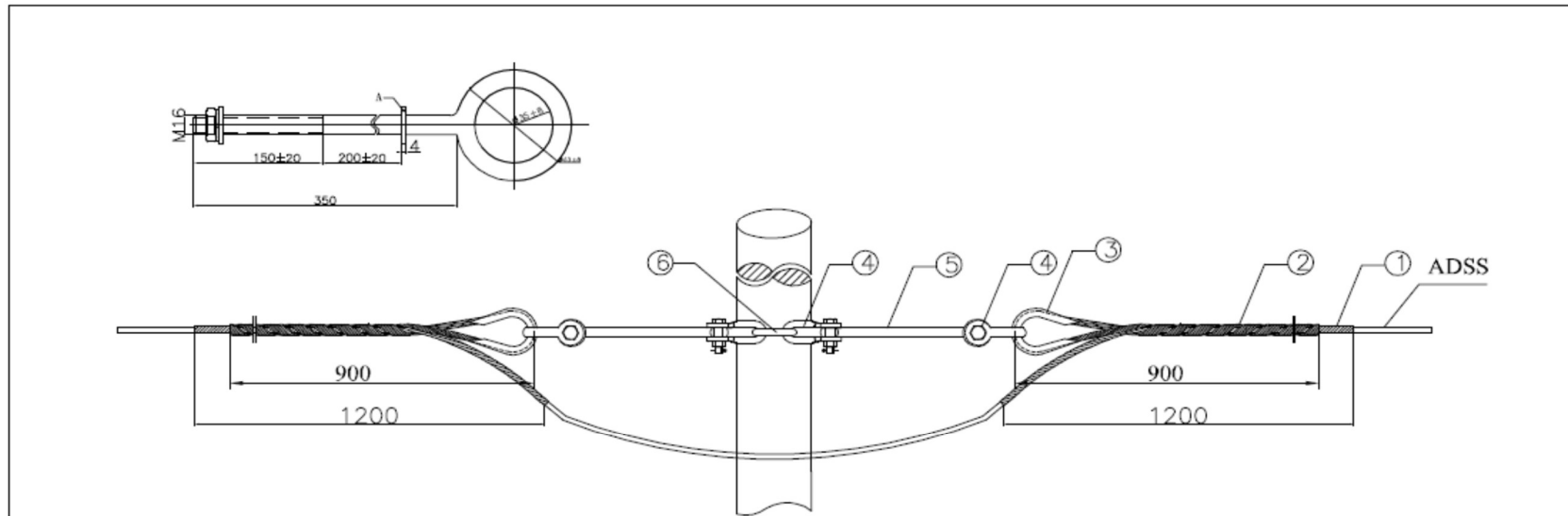


NOTE:

1. Application of span $\leq 200M$.
2. Range of diameter of cable dia.: 12.7-13.5mm.
3. Grip strength: $\geq 95\%$ RTS.
4. All ferrous parts are hot-dip galvanized.
5. All dimensions are in millimeters.

ITEM	QTY	DESCRIPTION	TYPE	MATERIAL
6	1	SHOULDER EYE BOLT	TPC-16*350	GALV. STEEL
5	2	EXTENSION RODS	Y-300	GALV. STEEL
4	4	BOW SHACKLE	U-4	GALV. STEEL
3	2	CLEVIS THIMBLE	CH-2	GALV. STEEL
2	2	OUTER TENSION RODS	ANY 1300 200-W	AL CLAD STEEL
1	2	INNER TENSION RODS	ANY 1300 200-N	AL CLAD STEEL

Tolerance		Tension string for ADSS TYPE: ANY 1300 200		
$\leq 30mm$	$\pm 1.5mm$			
$> 30mm$	$\pm 5\%$			
MAX.	$\pm 10mm$			
DRAWING	L.Z.G	DATE: 2020-03-05	DRAWING NO.	Version
VERIFY	ZHJ		ANY 1300 200	A
RATIFICATION	ZHJ			

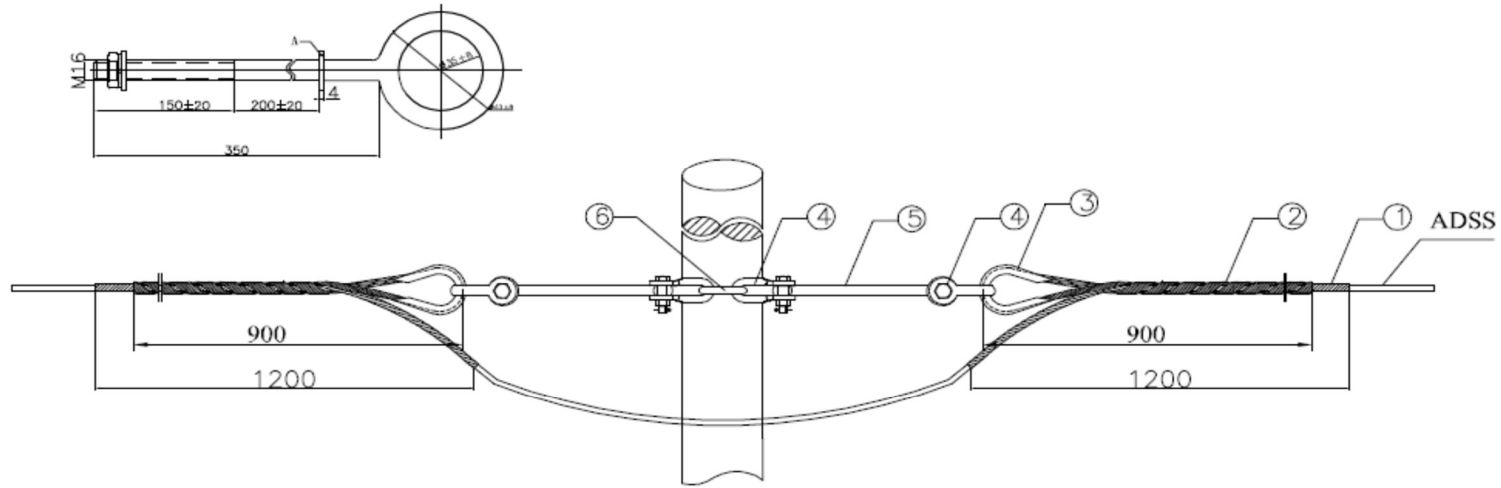


NOTE:

1. Application of span $\leq 200M$.
2. Range of diameter of cable dia.: 13.0-13.9mm.
3. Grip strength: $\geq 95\%$ RTS.
4. All ferrous parts are hot-dip galvanized.
5. All dimensions are in millimeters.

ITEM	Q'TY	DESCRIPTION	TYPE	MATERIAL
6	1	LOOP CONVEYOR	TPC-16*350	GALV. STEEL
5	2	EXTENSION RODS	Y-300	GALV. STEEL
4	4	BOW SHACKLE	U-4	GALV. STEEL
3	2	CLEVIS THIMBLE	CH-2	GALV. STEEL
2	2	OUTER TENSION RODS	ANY 1400 200-W	AL CLAD STEEL
1	2	INNER TENSION RODS	ANY 1400 200-N	AL CLAD STEEL

Tolerance		Tension string for ADSS TYPE: ANY 1400 200		
$\leq 30mm$	$\pm 1.5mm$			
$> 30mm$	$\pm 5\%$			
MAX.	$\pm 10mm$			
DRAWING	L.Z.G	DATE: 2020-04-23	DRAWING NO.	Version
VERIFY	ZHJ		ANY 1400 200	A
RATIFICATION	ZHJ			

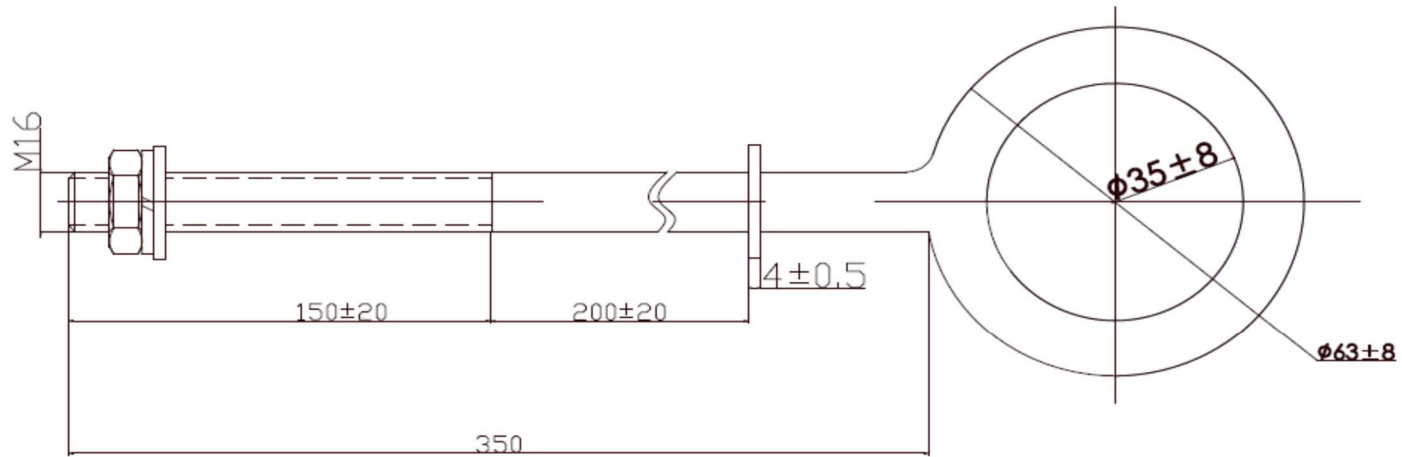


NOTE:

1. Application of span $\leq 200M$.
2. Range of diameter of cable dia.: 17.0-17.9mm.
3. Grip strength: $\geq 95\%$ RTS.
4. All ferrous parts are hot-dip galvanized.
5. All dimensions are in millimeters.

6	1	LOOP CONVEYOR	TPC-16*350	GALV. STEEL
5	2	EXTENSION RODS	Y-300	GALV. STEEL
4	4	BOW SHACKLE	U-4	GALV. STEEL
3	2	CLEVIS THIMBLE	CH-2	GALV. STEEL
2	2	OUTER TENSION RODS	ANY 1800 200-W	AL CLAD STEEL
1	2	INNER TENSION RODS	ANY 1800 200-N	AL CLAD STEEL
ITEM	QTY	DESCRIPTION	TYPE	MATERIAL

Tolerance		Tension string for ADSS TYPE: ANY 1800 200			
$\leq 30mm$	$\pm 1.5mm$				
$> 30mm$	$\pm 5\%$				
MAX.	$\pm 10mm$				
DRAWING		L.Z.G	DATE:2020-04-23	DRAWING NO.	Version
VERIFY		ZHJ			
RATIFICATION		ZHJ			
				ANY 1800 200	A

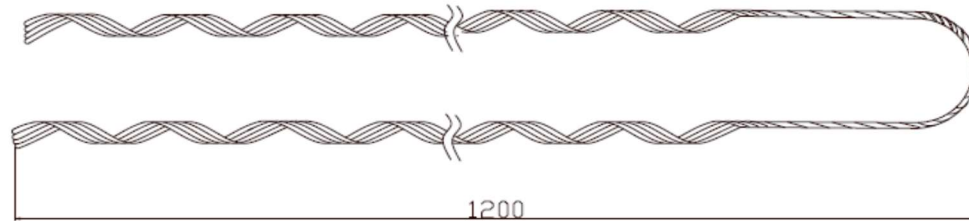


NOTE:
 1. Hot dip galvanized surface treatment.
 2. All dimensions are in millimeters.

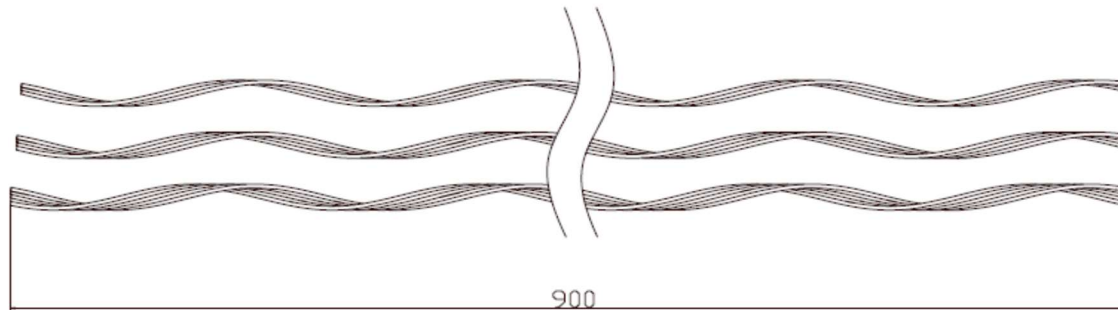
Tolerance			SHOULDER EYE BOLT TPC-16*350		
≤30mm	±1.5mm				
>30mm	± 5%				
MAX.	± 10mm				
DRAWING		L.Z.G	DATE:2020-03-05	DRAWING NO. TPC-16*350	Version
VERIFY		ZHJ			A
RATIFICATION		ZHJ			



OUTER PREFORMED



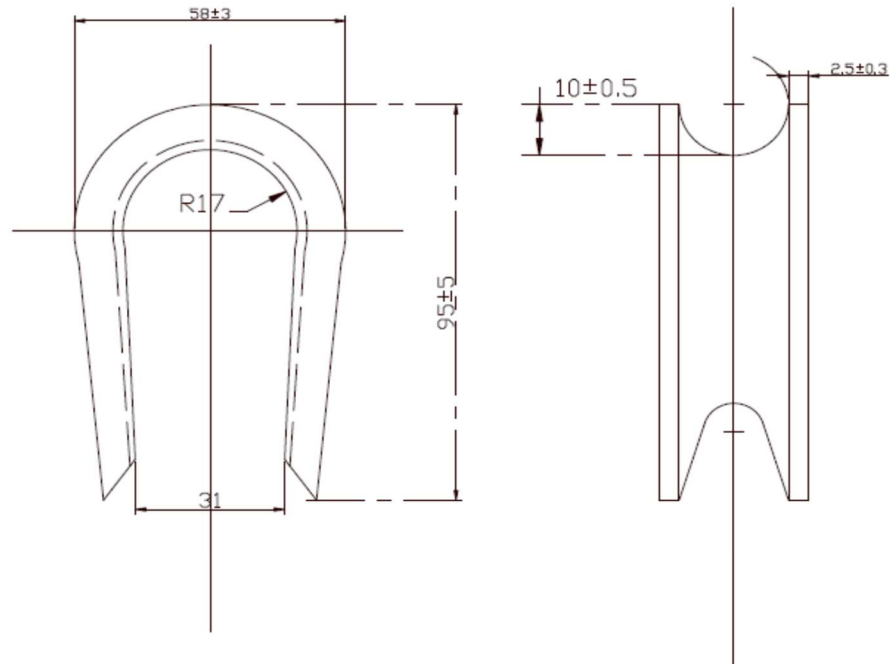
INNER PREFORMED



NOTE:

- 1.Application of span $\leq 200M$.
- 2.Range of diameter of cable dia.:12.7-13. 5mm.
- 3.Grip strength: $\geq 95\%$ RTS.
- 4.All dimensions are in millimeters.
- 5.The Material of Tension Rods: AL CLAD STEEL.

Tolerance		Tension string for ADSS TYPE:ANY 1300 200		
$\leq 30mm$	$\pm 1.5mm$			
$> 30mm$	$\pm 5\%$			
MAX.	$\pm 10mm$	DATE:2020-03-05	DRAWING NO.	Version
DRAWING	L.Z.G		ANY 1300 200	A
VERIFY	ZHJ			
RATIFICATION	ZHJ			



NOTE:
1.Hot dip galvanized surface treatment.

Tolerance		CLEVIS THIMBLE TYPE:CH-2		
≤30mm	±1.5mm			
>30mm	±5%			
MAX.	±10mm			
DRAWING	L.Z.G	DATE:2020-03-05	DRAWING NO.	Version
VERIFY	ZHJ		CH-2	A
RATIFICATION	ZHJ			



