

FE-M12AX-1/8-12C Dome Type Optic Cable Splice Closure



1. Description:

GJS03-M12AX-1/8-12C optic splice closure is a quick to install, reliable sealed closure. With engineered plastic, injection-molding, and excellent mechanical strength, it can prevent aging caused by cold, hot, oxygen, UV etc. effectively. With flame retardant materials, waterproof, anti-vibration and anti-impact box, the closure could protect the optic cable joints from tensile, impact, bending, flattening, twisting, and axial compression. All the sealing accessories pass the viscosity and white-ant resistance test. Reliable sealing performance, convenient for repeated use.

2. Application:

Widely used to connect or branch the outdoor optic cable fibers in wall/pole applications. Fully Mechanical sealing and re-open design, available for split with fast connectors without open the closure. Simple inner structured and easy to installation, is the best choice for the network construction.

Model	Trays	Tray capacity	Max Capacity	Dimensions in Mm (biggest point)	Entry port & Available cable dia.	Raw material
FE-M12AX-1/8-12C	1	12c	12 c	183*182	1 oval port: $\Phi 10-\Phi 16$ 8 pcs SC adapter ports for drop cable	Dome & base: Modified P.P Tray: ABS
Sealing method			Full Mechanical sealing way.		Application	Wall or pole application
Bending Radius			> 40mm		Durability	25 years
Available Splitter			1 piece 1:8/2:8 micro PLC splitter			

3. Technical Parameter:

Working temperature : $-40^{\circ}\text{C}\sim+65^{\circ}\text{C}$.

Atmospheric Pressure : 62—106kPa.

Axial Tension:> 1000N/1min








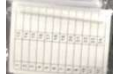
Stretching Resistance> 2000N/10cm² (1min).

Flatten Pressure: > 2000N/100mm(1min)

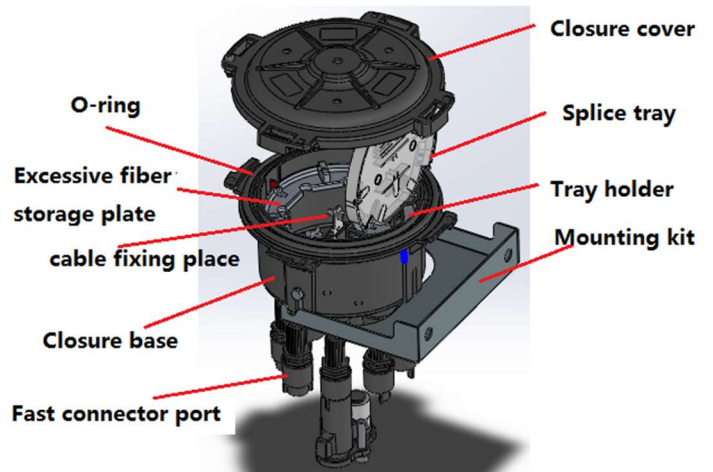
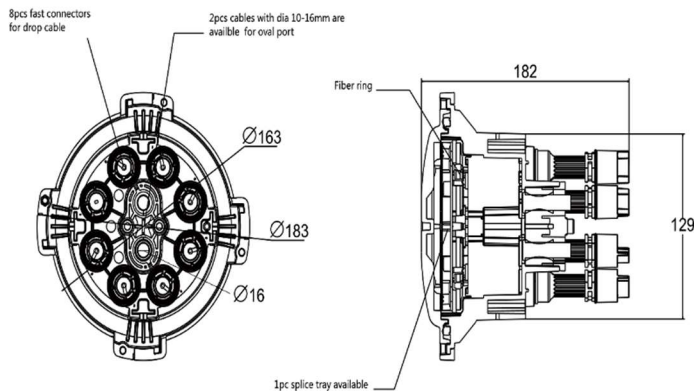
Insulation Resistance: > $2 \times 10^4\text{M}\Omega$

Voltage Strength : 15KV (DC) /1 min, no arc over or breakdown

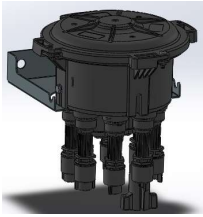
4. Main Accessories:

Item	Qty	Picture	Item	Qty	Picture
Pole mounting kits	1 Ordered as optional		1. Special wrench	1	
wall mounting kits	1 Ordered as optional		Oval port sealing rubber	1 bag	
Splice protective tube	Max. 12 pcs	 optional	Desiccant	1	 optional
Cleaning tissue	1 bag	 optional	Number sticker	1 pc	

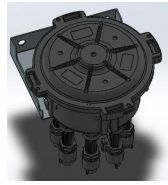
5. Exterior Structure Diagram



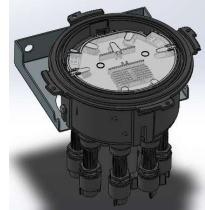
6. Installation Guidance



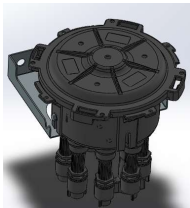
Loosen the screw on the dome



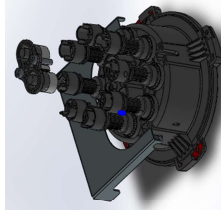
Left hand to hold the base, and right hand to open closure in a counter-clockwise direction.



Put the sealing O- ring in the groove and keep it snug



Rotate the dome on the base and keep the closure seal well.

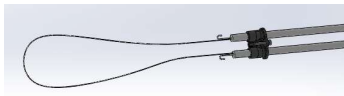


Use the wrench to screw off the gland type round ports, and take off the port blocker.

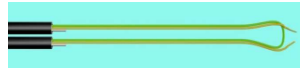


Remove the sheath of the cable, clean it, spare 2.5-2.8 m optic fibers and 60-70mm cable strength member.

Use pincer pliers to bend the cable strength member into a hook shape.



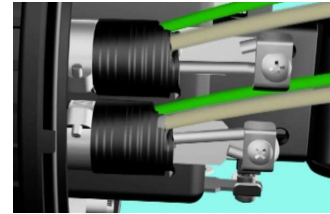
Put the oval ports sealing devices through the uncut cable orderly in the direction of the red arrow. The silicon rubber and gel rubber shall cut on sides with the art knife to put on the uncut cable. Then put in the oval port.



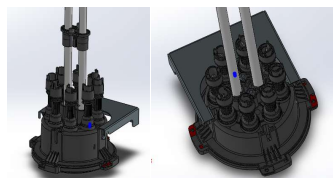
Cut in the middle of the splice and fusion optic fibers



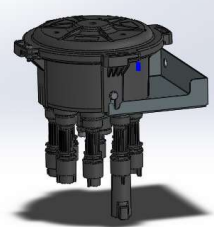
Put the transparent bare cable protective tube through the optical fiber and wrap the PVC tape on the joints of bare cable tube and cable sheath.



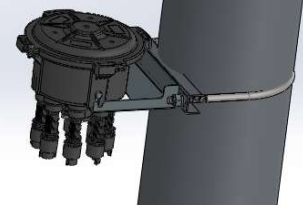
Fix the cable in the hose clamp and tighten the screw to fix the cable's strength member.



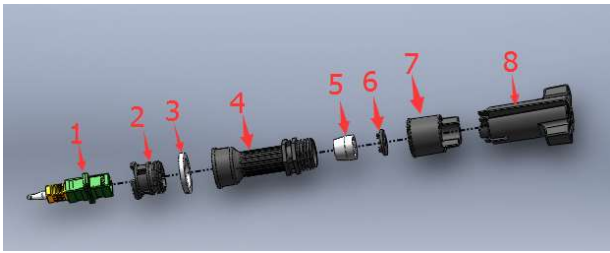
Put the oval ports sealing devices into the oval port and screw up the oval port.



wall mounting installation



pole mounting installation



5. Fast connector kit components

- | | | |
|---------------------|----------------------------|-------------------|
| 1) SC type adapter | 2) Adapter fixer | 3) Sealing gasket |
| 4) Faster protector | 5) Drop cable sealing plug | 6) Gasket |
| 7) Tighten nut | 8) Special wrench | |

Notes: The adapter fixer and adapter are fixing on the base before packing.

Fast connector assembling method



Cut the drop cable sealing plug at the blue lined place.

Assembly the faster connector orderly in the direction of red arrow.

After assembly the fast connector in step 2, plug the fast connector in the adapter and tighten the fast connector protector.

Put on the drop cable sealing plug into the connector protector, and put the gasket pin into the plug groove, then screw up the tighten nut. (special wrench can be used here)



