



FROG ENGINEERING

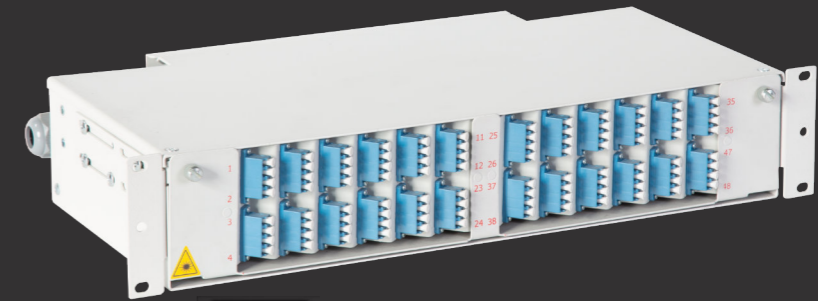
M TYPE FIBER OPTIC TERMINATION PANELS

M Type Fiber Optic Termination Panels provide professional cable management and easy fiber termination availability with the telescopic rail structure and 1U, 2U, 3U, 4U options. Internal tray is installed on telescopic rails to provide a smoother movability inside and outside.

Thanks to the special design, the gland lug used on the left and right for cable inlets is removed and the net width of the panel is kept. Specially designed 45° angled adapter modules provide easy access to the optic interconnection cables and splice cassette and pigtails when the tray is opened.



M TYPE 1U



M TYPE 2U



M TYPE 3U



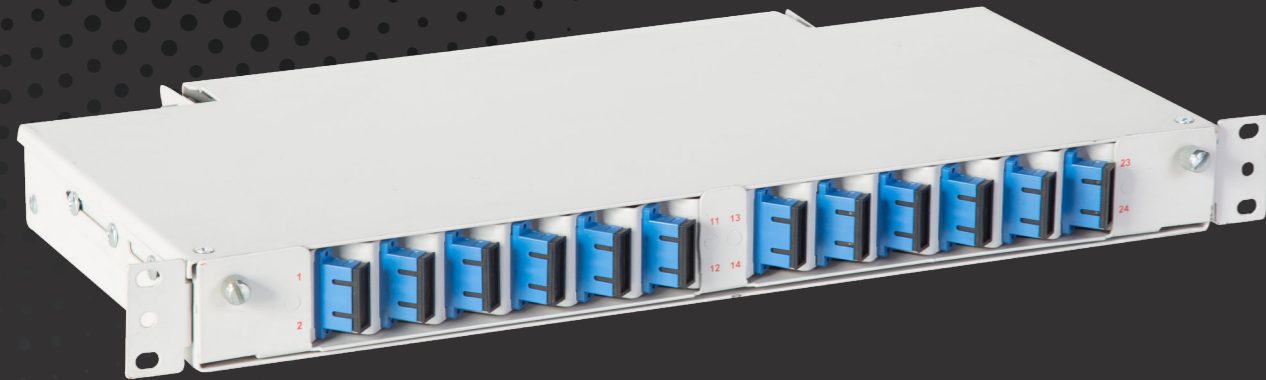
M TYPE 4U





FROG ENGINEERING

1U M TYPE FIBER OPTIC TERMINATION PANELS



TECHNICAL FEATURES

- Telescopic rail system
- Managing low and high number of fiber connections with high capacity
- Limited movability for fiber cables and cable safety with glands
- Fiber optic guidance tubes to protect and direct the fiber cables to the splice cassettes
- Easy installation and access
- Cable management for minimum cable bending inside the panel
- 35mm fiber bending bracket control
- PG16 Glands (optionally PG21)
- Compliance with all types of adapters (SC, FC, ST, LC etc.)



TECHNICAL DETAILS

- Capacity: 1U, 12 ports
- Maximum Capacity: 48 ports
- Dimensions: (19") W=482mm x D=238mm x 1U (H=44,45 mm)
- Material: Carbon Steel
- Weight: 4 kg
- Color: RAL 7035 Light Grey or RAL 9005 Black

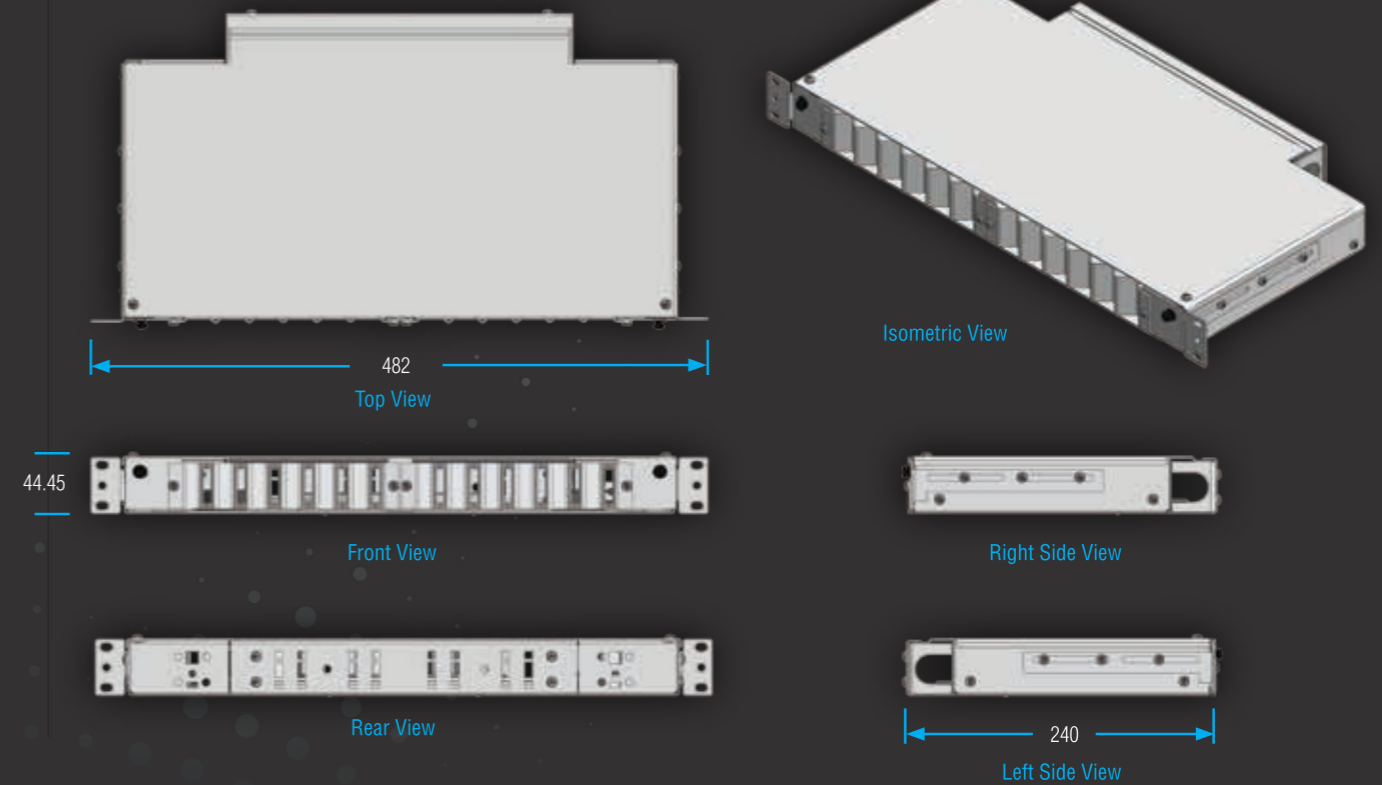
SET CONTENTS

- Self-adhesive organizer 5 pcs
- M5 splice cassette nut 1 pcs
- M6 screw and nut set (4 pcs) 1 set
- 50cm spiral tube 1 pcs
- 2,5 x 100mm cable tie 5 pcs
- PG16 gland 2 pcs

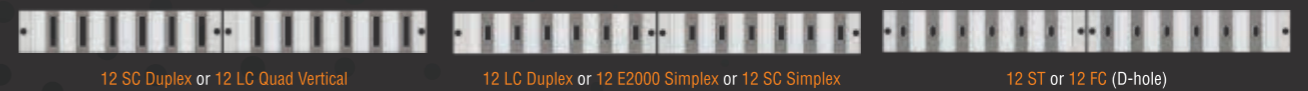
INSTALLATION AREAS

LAN & WAN projects, FTTx installations and Data Centers

Technical Drawing



Port Options



Given port numbers are based on the connector numbers.

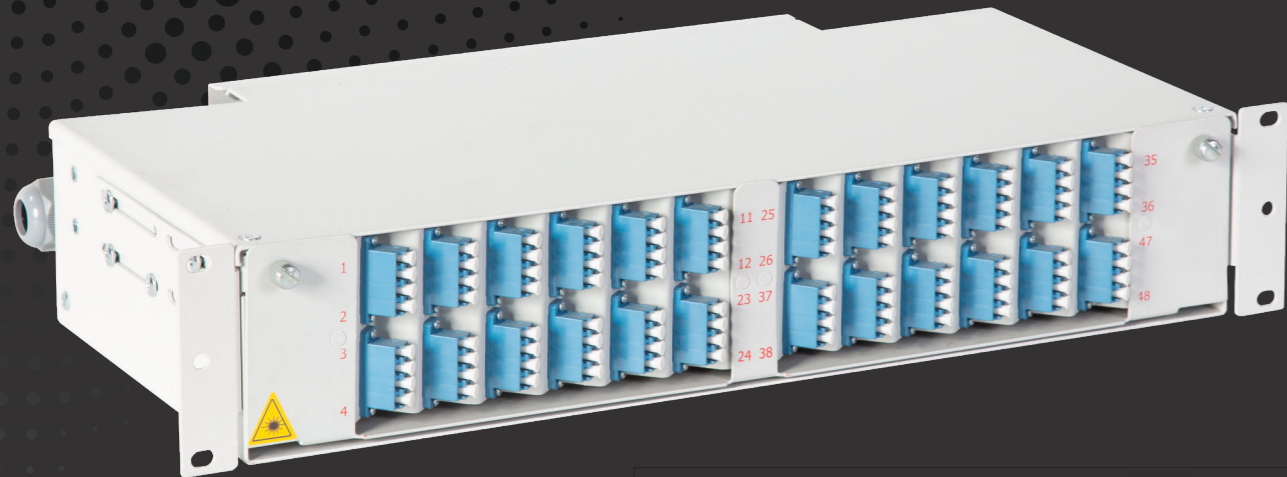
Product Code	1U M TYPE FIBER OPTIC TERMINATION PANELS						Logistics		
	(U)	Port	Width W	Depth D	Height H	Net Weight (kg)	Width	Depth	Height
FE.FOM1U12SCD.XX	1U	12	482 mm	240 mm	44.5 mm	4.0 kg	510 mm	260 mm	50 mm
FE.FOM1U12SCS.XX	1U	12	482 mm	240 mm	44.5 mm	4.0 kg	510 mm	260 mm	50 mm
FE.FOM1U12ST.XX	1U	12	482 mm	240 mm	44.5 mm	4.0 kg	510 mm	260 mm	50 mm

XX= Color Code, 02 specifies RAL7035 Light Grey / 01 specifies RAL9005 Black. The color codes are specified by the customer on the order.



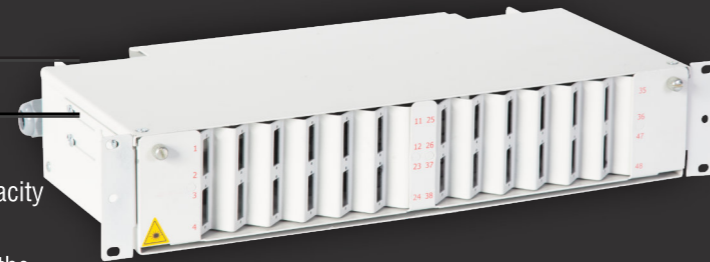
FROG ENGINEERING

2U M TYPE FIBER OPTIC TERMINATION PANELS



TECHNICAL FEATURES

- Telescopic rail system
- Managing low and high number of fiber connections with high capacity
- Limited movability for fiber cables and cable safety with glands
- Fiber optic guidance tubes to protect and direct the fiber cables to the splice cassettes
- Easy installation and access
- Cable management for minimum cable bending inside the panel
- 35mm fiber bending bracket control
- PG16 Glands (optionally PG21)
- Compliance with all types of adapters (SC, FC, ST, LC etc.)



TECHNICAL DETAILS

- Capacity: 2U, 24 ports
- Maximum Capacity: 48 ports
- Dimensions: (19") W=482mm x D=238mm x 2U (H=88,9 mm)
- Material: Carbon Steel
- Weight: 4,8 kg
- Color: RAL 7035 Light Grey or RAL 9005 Black

SET CONTENTS

- Self-adhesive organizer 5 pcs
- M5 splice cassette nut 1 pcs
- MC screw and nut set (4 pcs) 1 set
- 50cm spiral tube 1 pcs
- 2,5 x 100mm cable tie 5 pcs
- PG16 gland 2 pcs

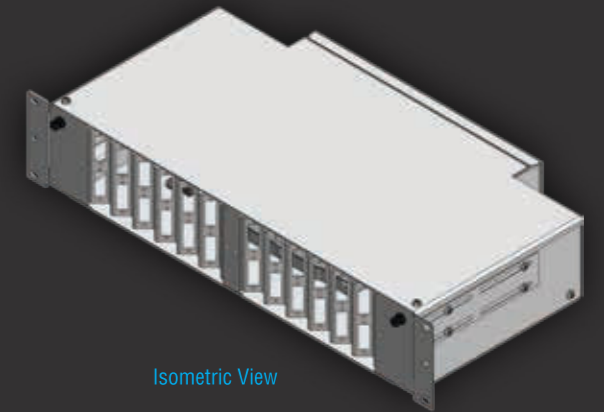
INSTALLATION AREAS

LAN & WAN projects, FTTx installations and Data Centers

Technical Drawing



482
Top View



Isometric View



Front View



Right Side View

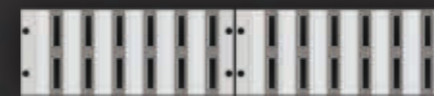


Rear View

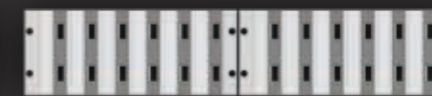


240
Left Side View

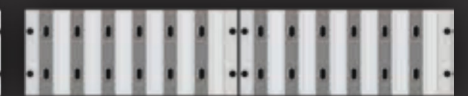
Port Options



24 SC Duplex or 24 LC Quad Vertical



24 LC Duplex or 24 E2000 Simplex or 24 SC Simplex



24 ST or 24 FC (D-hole)

Given port numbers are based on the connector numbers.

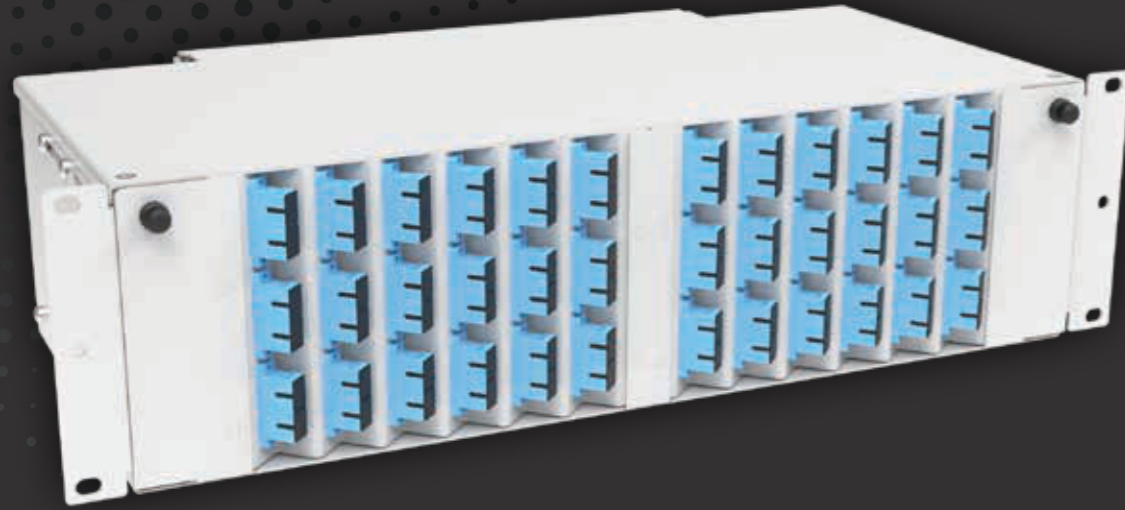
Product Code	2U M TYPE FIBER OPTIC TERMINATION PANELS						Logistics		
	(U)	Port	Width W	Depth D	Height H	Net Weight (kg)	Width	Depth	Height
FE.FOM2U24SCD.XX	2U	24	482 mm	240 mm	85.5 mm	4.8 kg	510 mm	260 mm	90 mm
FE.FOM2U24SCS.XX	2U	24	482 mm	240 mm	85.5 mm	4.8 kg	510 mm	260 mm	90 mm
FE.FOM2U24ST.XX	2U	24	482 mm	240 mm	85.5 mm	4.8 kg	510 mm	260 mm	90 mm

XX= Color Code, 02 specifies RAL7035 Light Grey / 01 specifies RAL9005 Black. The color codes are specified by the customer on the order.



FROG ENGINEERING

3U M TYPE FIBER OPTIC TERMINATION PANELS



TECHNICAL FEATURES

- Telescopic rail system
- Managing low and high number of fiber connections with high capacity
- Limited movability for fiber cables and cable safety with glands
- Fiber optic guidance tubes to protect and direct the fiber cables to the splice cassettes
- Easy installation and access
- Cable management for minimum cable bending inside the panel
- 35mm fiber bending bracket control
- PG16 Glands (optionally PG21)
- Compliance with all types of adapters (SC, FC, ST, LC etc.)



SET CONTENTS

- Self-adhesive organizer 5 pcs
- M5 splice cassette nut 1 pcs
- M6 screw and nut set (4 pcs) 1 set
- 50cm spiral tube 1 pcs
- 2,5 x 100mm cable tie 5 pcs

TECHNICAL DETAILS

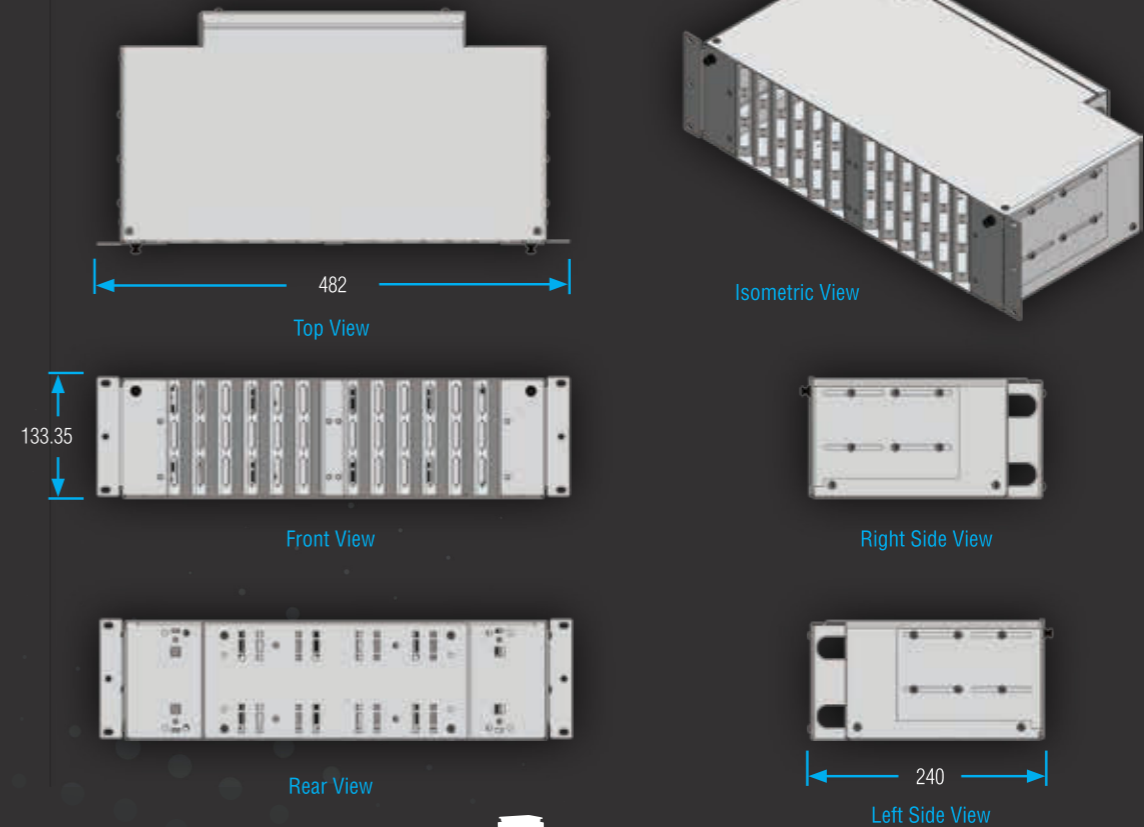
- Capacity: 3U, 36 ports
- Maximum Capacity: 72 ports
- Dimensions: (19") W=482mm x D=238mm x 3U (H=133mm)
- Material: Carbon Steel
- Weight: 5,6 kg
- Color: RAL 7035 Light Grey or RAL 9005 Black

INSTALLATION AREAS

LAN & WAN projects, FTTx installations and Data Centers



Technical Drawing



Port Options



Given port numbers are based on the connector numbers.

Product Code	3U M TYPE FIBER OPTIC TERMINATION PANELS						Logistics		
	(U)	Port	Width W	Depth D	Height H	Net Weight (kg)	Width	Depth	Height
FE.FOM3U36SCD.XX	3U	36	482 mm	240 mm	133.35 mm	5.6 kg	510 mm	260 mm	155 mm
FE.FOM3U36SCS.XX	3U	36	482 mm	240 mm	133.35 mm	5.6 kg	510 mm	260 mm	155 mm
FE.FOM3U36ST.XX	3U	36	482 mm	240 mm	133.35 mm	5.6 kg	510 mm	260 mm	155 mm

XX= Color Code, 02 specifies RAL7035 Light Grey / 01 specifies RAL9005 Black. The color codes are specified by the customer on the order.



FROG ENGINEERING

4U M TYPE FIBER OPTIC TERMINATION PANELS



TECHNICAL FEATURES

- Telescopic rail system
- Managing low and high number of fiber connections with high capacity
- Limited movability for fiber cables and cable safety with glands
- Fiber optic guidance tubes to protect and direct the fiber cables to the splice cassettes
- Easy installation and access
- Cable management for minimum cable bending inside the panel
- 35mm fiber bending bracket control
- PG16 Glands (optionally PG21)
- Compliance with all types of adapters (SC, FC, ST, LC etc.)



SET CONTENTS

- Yapışkan organizör 5 adet
- M6 4'lü Vida-somun seti 1 adet
- M5 kaset somunu 1 adet
- 50 cm spiral boru 1 adet
- 2.5x100mm kablo bağı 5 adet
- PG16 rakor 4 adet

TECHNICAL DETAILS

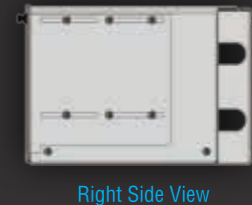
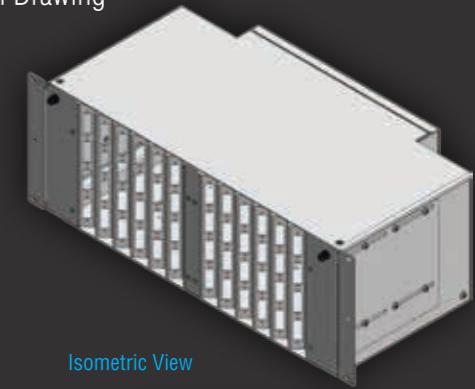
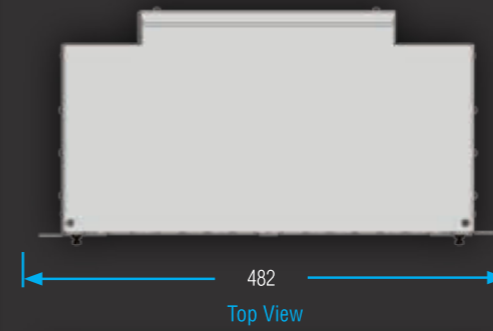
- Capacity: 4U, 48 ports
- Maximum Capacity: 72 ports
- Dimensions: (19") W=482mm x D=238mm x 4U (H=177,8 mm)
- Material: Carbon Steel
- Weight: 6,44 kg
- Color: RAL 7035 Light Grey or RAL 9005 Black

INSTALLATION AREAS

LAN & WAN projects, FTTx installations and Data Centers



Technical Drawing



Port Options



48 SC Duplex or 48 LC Quad Vertical



48 LC Duplex or 48 E2000 Simplex or 48 SC Simplex



48 ST or 48 FC (D-hole)

Given port numbers are based on the connector numbers.

Product Code	4U M TYPE FIBER OPTIC TERMINATION PANELS						Logistics		
	(U)	Port	Width W	Depth D	Height H	Net Weight (kg)	Width	Depth	Height
FE.FOM4U48SCD.XX	4U	48	482 mm	240 mm	166 mm	6.4 kg	510 mm	260 mm	170 mm
FE.FOM4U48SCS.XX	4U	48	482 mm	240 mm	166 mm	6.4 kg	510 mm	260 mm	170 mm
FE.FOM4U48ST.XX	4U	48	482 mm	240 mm	166 mm	6.4 kg	510 mm	260 mm	170 mm

XX= Color Code, 02 specifies RAL7035 Light Grey / 01 specifies RAL9005 Black. The color codes are specified by the customer on the order.