

## GJS03-M10AX-JX-RQP DOME ENCLOSURE WIT MECHANICAL SEAL



### 1.1 Introduction:

This product is used to connect the distribution cable and the incoming cable, is widely applied in telecommunication, network systems, CATV, ISPs, etc. It is constructed with scientifically formulated plastics and shaped by injection molding, with anti-aging, anti-corrosion, flame retardant, waterproof, anti-vibration and anti-shock effects. Effectively protects the optic fibers from the influence of outdoor environment.

Dome-to-base design; the splice trays can hinge for access of any splice without disturbing others trays; Fast and reliable sealing performance, easy to package multiple times. With lightning protection grounding capabilities, it can be used in aerial, wall mounted or directly burial applications.

### 1.2 Specifications:

| Model:                       |   | GJS03-M10AX-JX-RQP***-*** |  |
|------------------------------|---|---------------------------|--|
| Size:                        | 651*302 mm<br>With ports length and clamp's biggest dia.                          | Raw material              | Dome, clamp, base: modified PP +GF<br>Tray: ABS<br>Metal parts: Stainless steel  |
| Entry ports number:          | 1 oval port<br>8 round ports  | Available cable dia.      | Oval port: available for 2 cables, with optional rubber for difference cable dia.<br>Round ports: with optional seal rubber for different cable dia. |
| Max. tray number             | For RQP-32-24c, max. hold 12 trays<br>For RQP-23-72c, max hold 6 trays            | Base sealing method       | Mechanical   |
| Tray capacity :              | RQP-32-24c: 24F/tray<br>RQP-23-72c:72F/ tray                                      | Applications:             | Aerial, directly buried, Wall/ pole mounting   |
| Max. closure splice capacity | With RQP-32-24c trays, max. splice 288F<br>With RQP-23-72c trays, Max splice 432F | IP grade                  | 68   |

### 1.3 Ordering guide

## GJS03-M10AX-JX - RQP\*\*\*-\*\*\*

AX: splice in the tray middle

RQP-23-72c: 72F tray  
RQP-32-24c: 24F tray

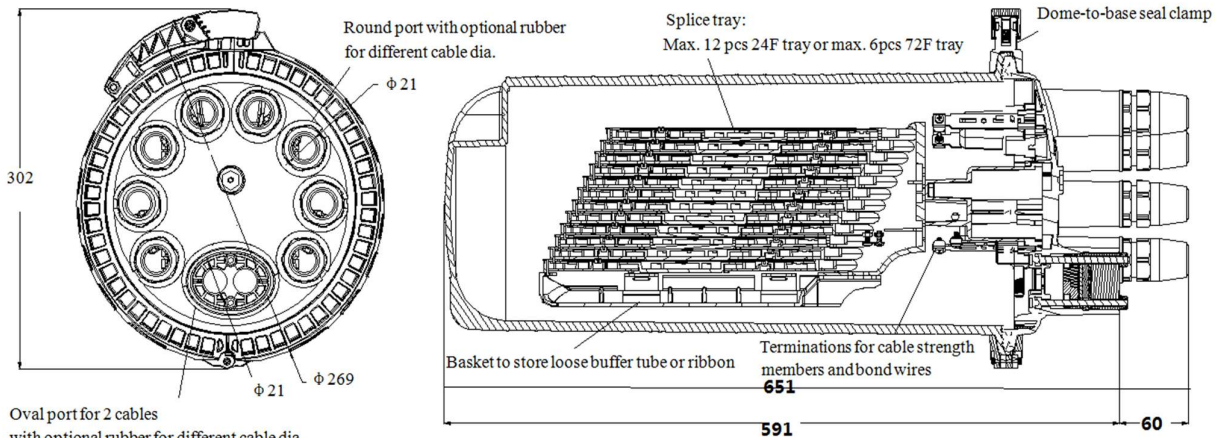
Max. 432F with 72F tray, 6 pcs  
Max. 288F with 24F tray, 12pcs

Mechanical seal base, with optional seal kits for round ports:

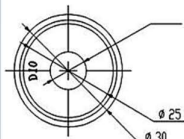
- D10 rubber for 8~10 mm cable.
- D14 rubber for 10~14mm cable.
- D18 rubber for 14~18mm cable
- D21 rubber for 18~21 mm cable.
- 8 holes rubber for 8pcs 2\*3mm drop cables
- 4 holes rubber for 4pcs 5~7mm cables.



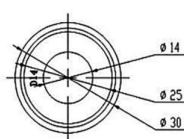
### 1.4 Exterior Structure Diagram.



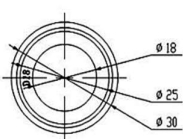
Oval port for 2 cables with optional rubber for different cable dia.



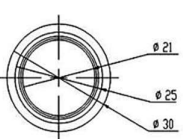
Round port rubber, cable dia. 8 to 10mm



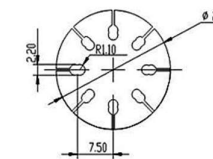
Round port rubber, cable dia. 10 to 14mm



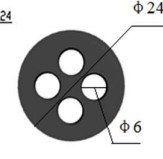
Round port rubber, cable dia. 14 to 18mm



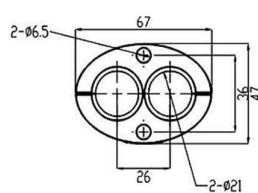
Round port rubber, cable dia. 18 to 21mm



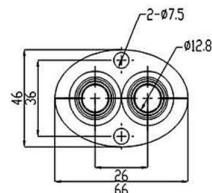
Round port rubber, 8pcs 2\*3 drop cables



Round port rubber, 4pcs 5-7 drop cables



Oval port rubber, for 2pcs 20mm cables



Oval port rubber, for 2pcs 8-12.8mm cables

### 1.5 Technical Parameter:

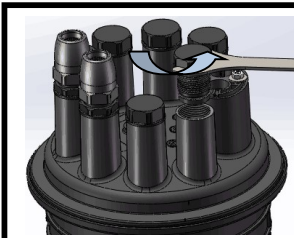
1. Working Temperature: -40 ~+65 degrees centigrade
2. Atmospheric Pressure: 62~106Kpa
3. Axial Tension: >1000N/1min
4. Flatten Resistance: 2000N/100 mm (1min)
5. Insulation resistance: >2\*10<sup>4</sup>MΩ
6. Voltage Strength: 15KV(DC)/1min, no arc over or breakdown
7. Temperature cycles: under -40°C~+65°C, with 60(+5) Kpa inner pressure, in 10cycles; Inner pressure shall decrease less than 5 Kpa when enclosure returns to normal temperature.
8. Durability : 25 years

### 1.6 Main components:

| Name                                 | Qty                     | Picture   | Name                          | Qty         | Picture   |
|--------------------------------------|-------------------------|---|-------------------------------|-------------|---|
| Dome                                 | 1pc                     |                | Tray                          | Max. 12 pcs |  RQP-32-24C    |
|                                      |                         |   |                               | Max. 6 pcs  |  RQP-23-72c    |
| Clamp                                | 1pc                     |                | Valve                         | 1           |                |
| Base                                 | 1pc                     |                | Modified O-ring               | 1           |                |
| Cable Strengthen member attach plate | 1set                    |                | Velcro strip with one X flake | 1           |                |
| optic joints protection tube         | Max. 432                |                | Ground feed-through lug       | 1           |                |
| Storage basket                       | 1                       |               | Round port blocker            | 8           |               |
|                                      |                         | or<br>       |                               |             |   |
| Round Port accessories bag           | 8 pcs                   |              | Oval port accessories bag     | 1 kit       |              |
| Cleaning tissue                      | 1                       |              | Desiccant                     | 1           |              |
| Nylon tie                            | 12pcs/bag               |  Max. 3bags. | Transparent PE tube           | 8pcs/bag    |  Max. 3bags. |
| Wall mounting kits                   | 1 Standard offered with |              |                               |             |   |
| Aerial mounting kits                 | Order as optional       |             |                               |             |   |
| Pole mounting kits                   | Order as optional       |  2pc + 4pcs |                               |             |   |

## 1.7 Installation Guide

### 1.7.1 To open the round and oval port



Use wrench to screw off the gland type round ports, and take off the port blocker



Use the M6 hex nut wrench to screw off the screw then take off the oval port accessories

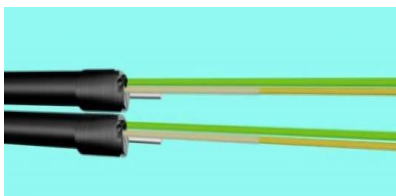
### 1.7.2 Inlet cable from round port



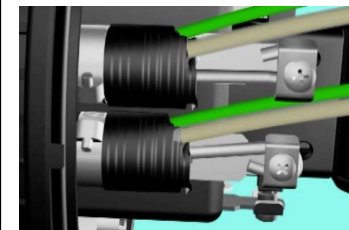
1. Put the round ports sealing devices through the cable orderly in the direction of the red arrow. Then put in the round port.



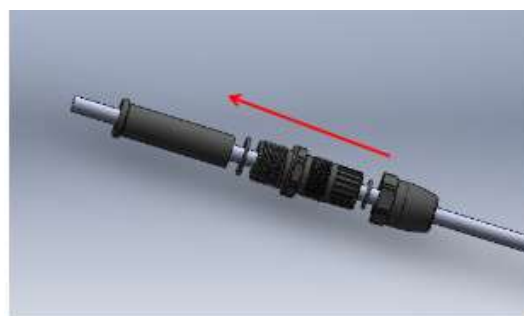
2. Remove the sheath of the cable, clean it, spare 1.1-1.6m optic fibers and 60-70mm cable strength member. Use pincer pliers to bend the cable strength member into a hook shape.



3. Put the transparent bare cable protective tube through the optic fiber and wrap the PVC tape on the joints of bare cable tube and cable sheath.

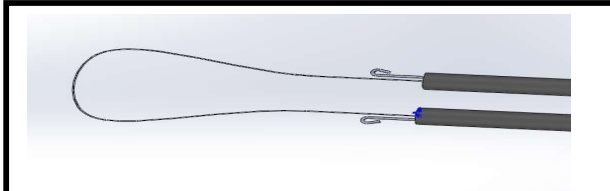


4. Fix the cable on the hose clamp and tighten the screw to fix the cable strength member.



5. Put the round ports sealing devices into the round port and screw up the round port.

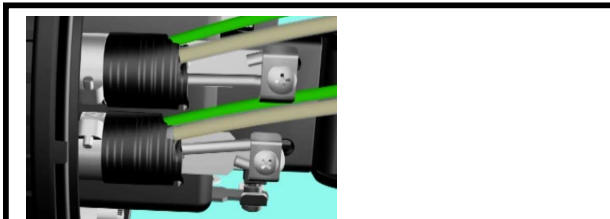
### 1.7.3 Inlet cable from oval port



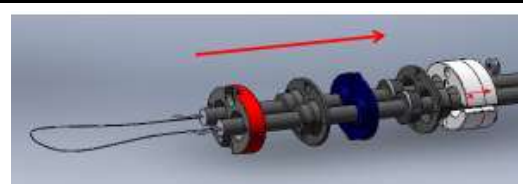
1. Remove the sheath of the cable, clean it, spare 2.5-2.8 m optic fibers and 60-70mm cable strength member. Use pincer pliers to bend the cable strength member into a hook shape.



3. Cut in the middle of the splice and fusion optic fibers



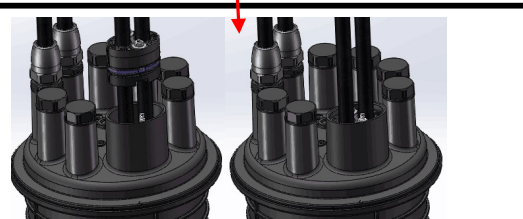
5. Fix the cable on the hose clamp and tighten the screw to fix the cable strength member.



2. Put the oval ports sealing devices through the uncut cable orderly in the direction of the red arrow. The silicon rubber and gel rubber shall cut on sides with the art knife to put on the uncut cable. Then put in the oval port.

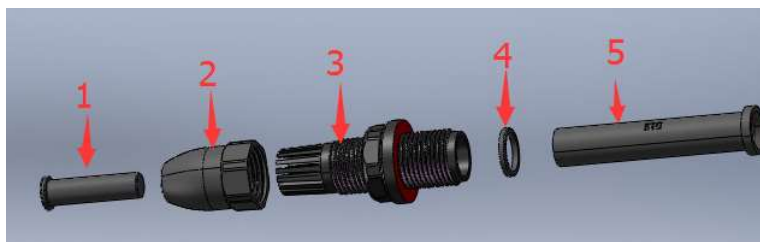


4. Put the bare cable protective tube through the optic fiber and wrap the PVC tape on the joints of bare cable tube and cable sheath



6. Put the oval ports sealing devices into the oval port and screw up the oval port.

### 1.7.4 Round Ports Components & Installation Diagram

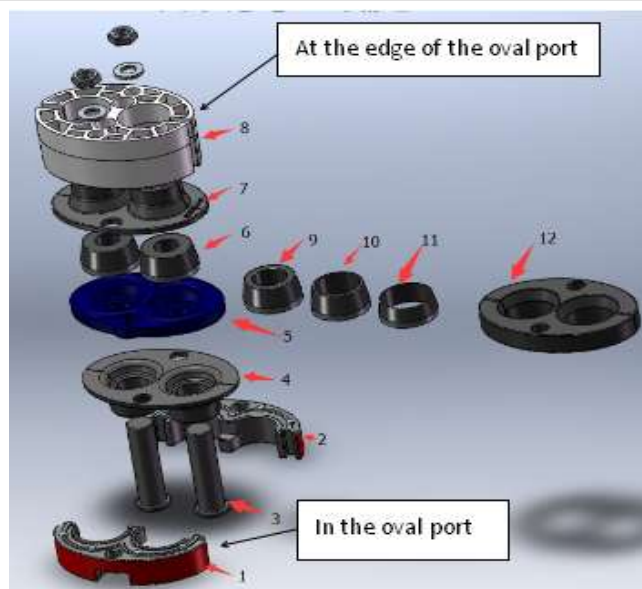


1. Entry port blocker
2. Cable press cap
3. Cable dia. adjust part
4. Gasket
5. T shape silicon sealing rubber

Notes:

1. Attention to the T shape rubber when installation, If displaced, deformed or twist, shall re-install the rubber.
2. Choose the T shape rubber according to cable dia.

### 1.7.5 Oval port accessories & Installation Diagram.



1. Left crescent plastic washer
2. Right crescent plastic washer
3. Entry port blocker
4. Conical double-hole variable diameter rubber plugs
5. Conical double gel plugs
6. Conical single-hole variable diameter rubber plug (optional size: 9, 10, and 11)
7. Conical double-hole variable diameter rubber plug (same accessories as item 4)
8. Oval port washer
9. Z-14 conical variable diameter plug
10. Z-18 conical variable diameter plug
11. Z-21 conical variable diameter plug
12. Closure conical double-hole rubber plug

#### **Cable Dia. 18~10 mm installation process:**

Accessories install order:

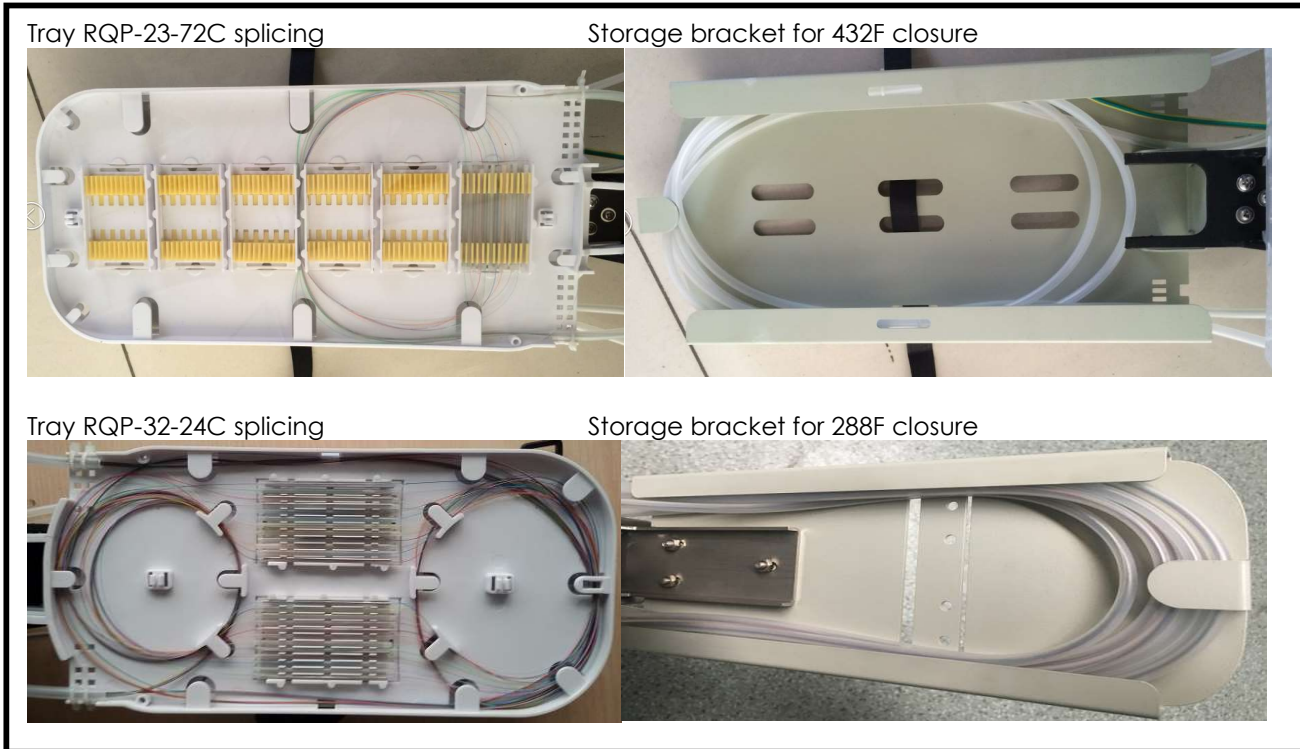
- 1) Use accessories 1 & 2 to clock the cable, and put it in the oval port
- 2) put the cable in the slots of accessory 3) Repeat step two to install the accessory
- 4) Choose the proper conical variable diameter plug from accessories 6, 9, 10 according to cable dia. And put the cable in the plug slots
- 5) Repeat step two to install the accessory but note install on an opposite direction (item 7 is item 4 in opposite direction)
- 6) Put the cable through accessory 8 and tighten the screws.

#### **Cable Dia. 21 mm installation process:**

Accessories install order: same as above cable dia. 18~10mm install way, just change the accessories for D-21mm use

Notes: every accessory shall be close to each other.

### 1.7.6 Fiber tray & Storage tray installs way



### 1.7.7 Installation of the enclosure

Clean the closure and put the spare desiccant and transparent tube in the empty place of the closure for re-installation. Lock the closure with clamp and screws.

Several installation conditions as bellow,

#### Pole mounting



#### Aerial



#### Wall mounting

