



**FROG ENGINEERING**

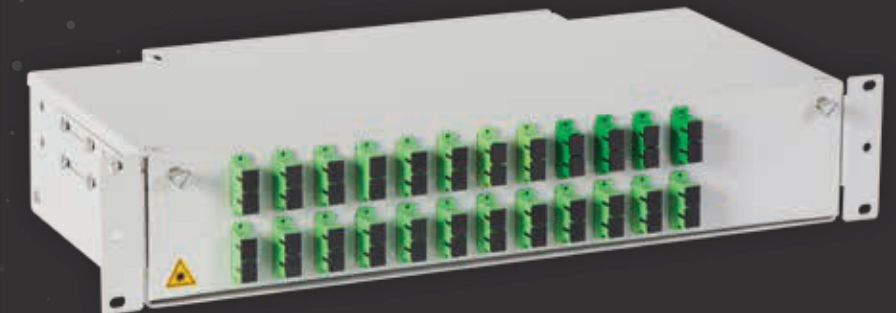
## **R TYPE FIBER OPTIC TERMINATION PANELS**

**R Type** Fiber Optic Termination Panels provide professional cable management and easy fiber termination availability with the telescopic rail structure and 1U, 2U, 3U, 4U options. Internal tray is installed on telescopic rails to provide a smoother movability inside and outside.

Thanks to the special design, the gland lug used on the left and right for cable inlets is removed and the net width of the panel is kept.



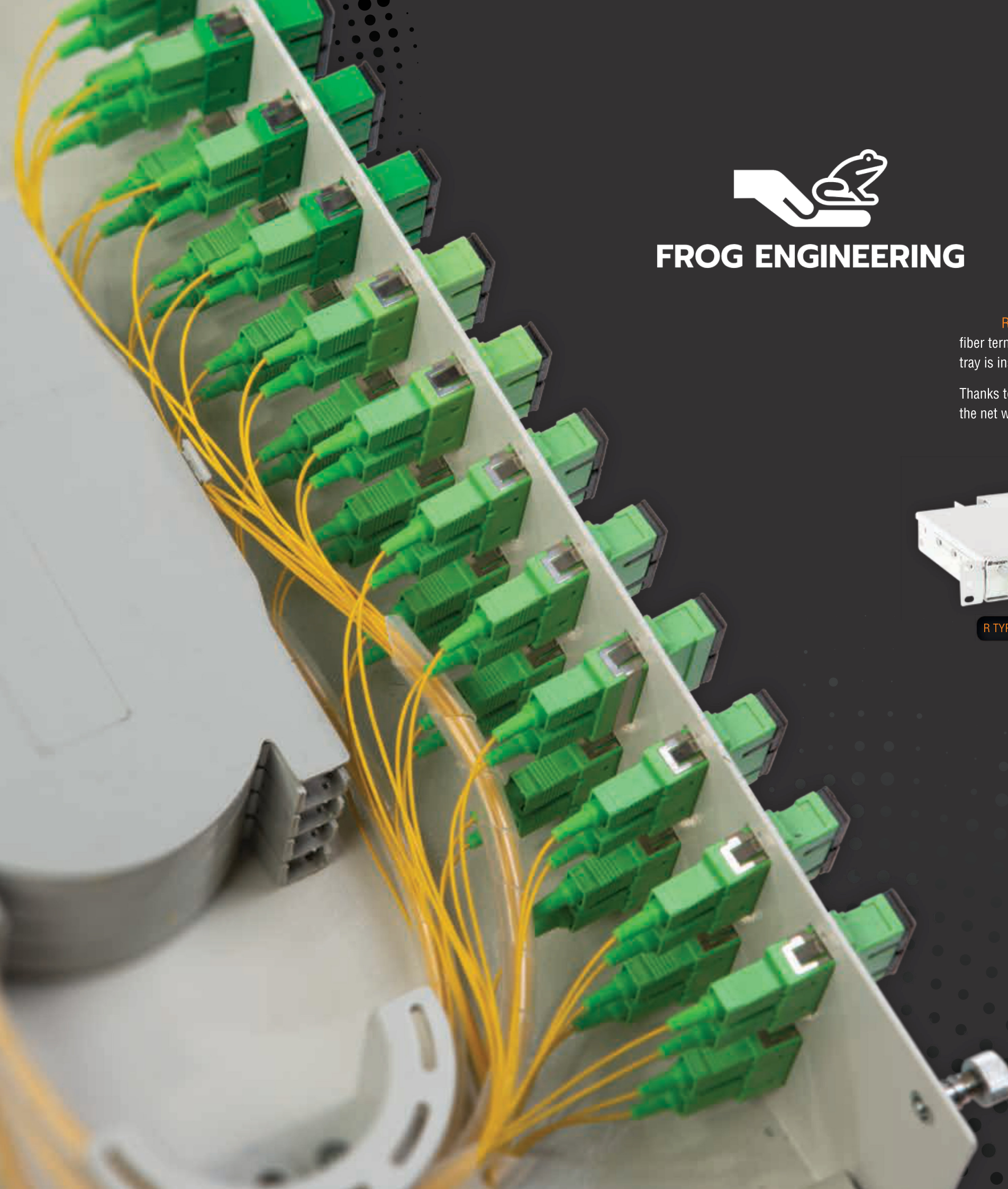
**R TYPE 1U**



**R TYPE 2U**



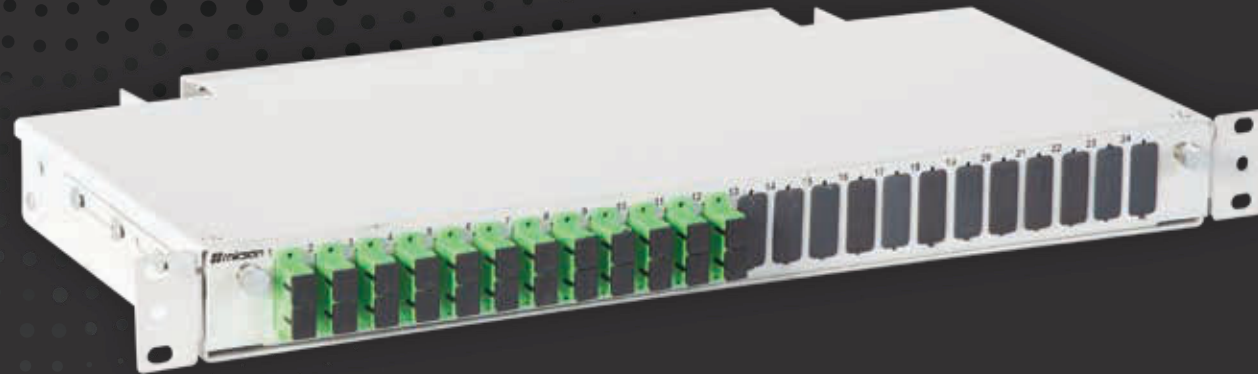
**R TYPE 3U**





FROG ENGINEERING

# 1U R TYPE FIBER OPTIC TERMINATION PANELS



## TECHNICAL FEATURES

- Telescopic rail system
- Managing low and high number of fiber connections with high capacity
- Limited movability for fiber cables and cable safety with glands
- Fiber optic guidance tubes to protect and direct the fiber cables to the splice cassettes
- Easy installation and access
- Cable management for minimum cable bending inside the panel
- 35mm fiber bending bracket control
- PG16 Glands (optionally PG21)
- Compliance with all types of adapters (SC, FC, ST, LC etc.)



## TECHNICAL DETAILS

- KCapacity: 1U, 12 / 24 ports
- Maximum Capacity: 48 ports
- Dimensions: (19") W=482mm x D=240mm x 1U (H=44,45 mm)
- Material: Carbon Steel
- Weight: 3,5 kg
- Color: RAL 7035 Light Grey or RAL 9005 Black

## SET CONTENTS

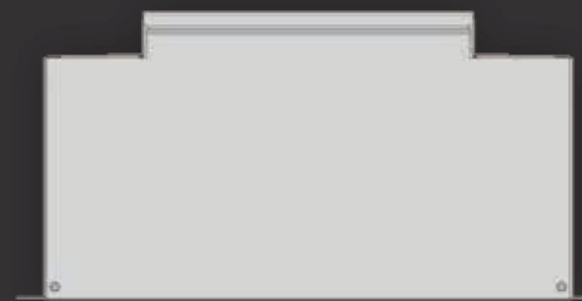
- Self-adhesive organizer 5 pcs
- M5 splice cassette nut 1 pcs
- M6 screw and nut set (4 pcs) 1 set
- 50cm spiral tube 1 pcs
- 2,5 x 100mm cable tie 5 pcs
- PG16 gland 2 pcs

## INSTALLATION AREAS

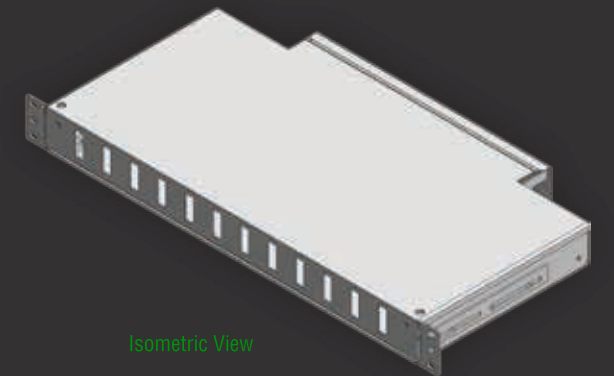
LAN & WAN projects, FTTx installations and Data Centers



Technical Drawing



Top View



Isometric View



Front View



Right Side View



Rear View

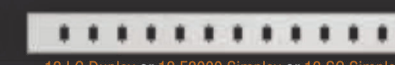


Left Side View

Port Options



12 SC Duplex or 12 LC Quad Vertical



12 LC Duplex or 12 E2000 Simplex or 12 SC Simplex



12 ST or 12 FC (D-hole)



24 SC Duplex or 24 LC Quad Vertical



24 LC Duplex or 24 E2000 Simplex or 24 SC Simplex



24 ST or 24 FC (D-hole)

Given port numbers are based on the connector numbers.

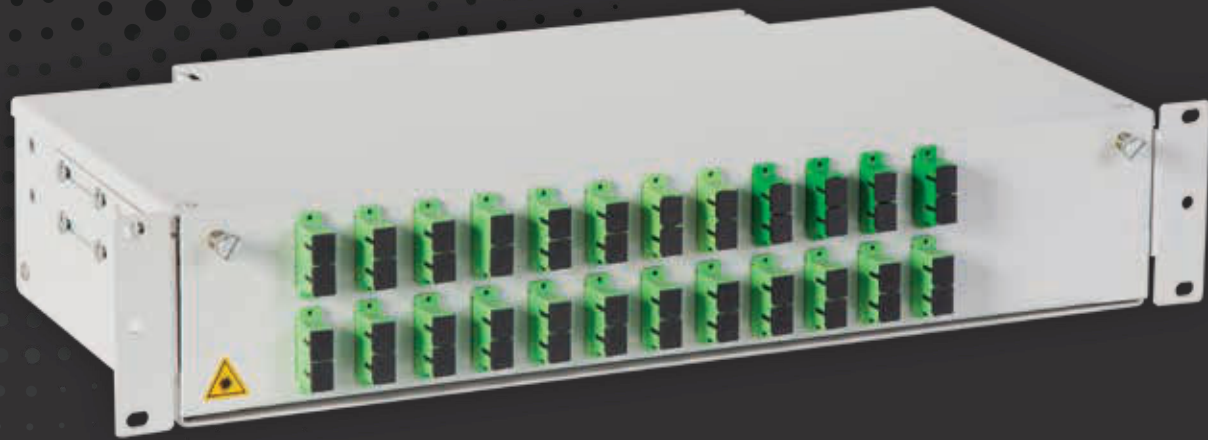
Product Code	1U R TYPE FIBER OPTIC TERMINATION PANELS						Logistics		
	(U)	Port	Width W	Depth D	Height H	Net Weight (kg)	Width	Depth	Height
FE.FOR1U12SCD.XX	1U	12	482 mm	240 mm	44,5 mm	3,5 kg	510 mm	245 mm	50 mm
FE.FOR1U12SCS.XX	1U	12	482 mm	240 mm	44,5 mm	3,5 kg	510 mm	245 mm	50 mm
FE.FOR1U12ST.XX	1U	12	482 mm	240 mm	44,5 mm	3,5 kg	510 mm	245 mm	50 mm
FE.FOR1U24SCD.XX	1U	24	482 mm	240 mm	44,5 mm	3,5 kg	510 mm	245 mm	50 mm
FE.FOR1U24SCS.XX	1U	24	482 mm	240 mm	44,5 mm	3,5 kg	510 mm	245 mm	50 mm
FE.FOR1U24ST.XX	1U	24	482 mm	240 mm	44,5 mm	3,5 kg	510 mm	245 mm	50 mm

XX= Color Code, 02 specifies RAL7035 Light Grey / 01 specifies RAL9005 Black. The color codes are specified by the customer on the order.



FROG ENGINEERING

# 2U R TYPE FIBER OPTIC TERMINATION PANELS



Technical Drawing

## TECHNICAL FEATURES

- Telescopic rail system
- Managing low and high number of fiber connections with high capacity
- Limited movability for fiber cables and cable safety with glands
- Fiber optic guidance tubes to protect and direct the fiber cables to the splice cassettes
- Easy installation and access
- Cable management for minimum cable bending inside the panel
- 35mm fiber bending bracket control
- PG16 Glands (optionally PG21)
- Compliance with all types of adapters (SC, FC, ST, LC etc.)



## TECHNICAL DETAILS

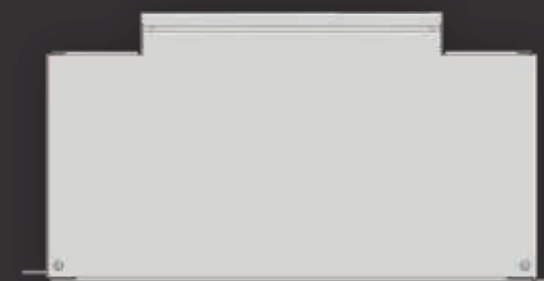
- Capacity: 2U, 24 / 48 ports
- Maximum Capacity: 48 ports
- Dimensions: (19") W=482mm x D=240mm x 2U (H=88,9 mm)
- Material: Carbon Steel
- Weight: 4 kg
- Color: RAL 7035 Light Grey or RAL 9005 Black

## INSTALLATION AREAS

LAN & WAN projects, FTTx installations and Data Centers

## SET CONTENTS

- Self-adhesive organizer 5 pcs
- M5 splice cassette nut 1 pcs
- M6 screw and nut set (4 pcs) 1 set
- 50cm spiral tube 1 pcs
- 2,5 x 100mm cable tie 5 pcs
- PG16 gland 2 pcs



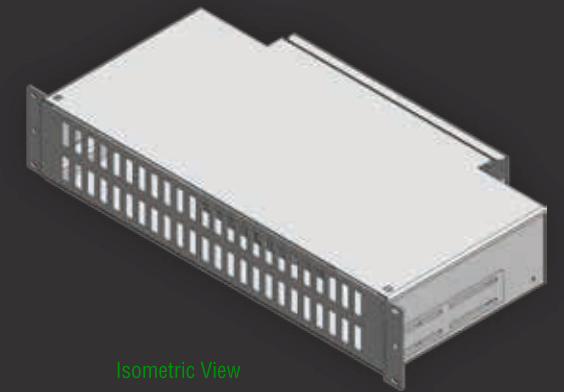
482  
Top View



88.9  
Front View



Rear View



Isometric View



Right Side View



240  
Left Side View

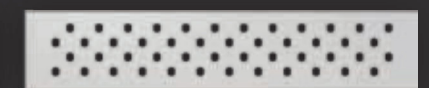
Port Options



48 SC Duplex or 48 LC Quad Vertical



48 LC Duplex or 48 E2000 Simplex or 48 SC Simplex



48 ST or 48 FC (D-hole)

Given port numbers are based on the connector numbers.

Product Code	2U R TYPE FIBER OPTIC TERMINATION PANELS						Logistics		
	(U)	Port	Width W	Depth D	Height H	Net Weight (kg)	Width	Depth	Height
FE.FOR2U48SCD.XX	2U	48	482 mm	240 mm	88.9 mm	4.2 kg	510 mm	260 mm	100 mm
FE.FOR2U48SCS.XX	2U	48	482 mm	240 mm	88.9 mm	4.2 kg	510 mm	260 mm	100 mm
FE.FOR2U48ST.XX	2U	48	482 mm	240 mm	88.9 mm	4.2 kg	510 mm	260 mm	100 mm

XX= Color Code, 02 specifies RAL7035 Light Grey / 01 specifies RAL9005 Black. The color codes are specified by the customer on the order.



FROG ENGINEERING

# 3U R TYPE FIBER OPTIC TERMINATION PANELS



## TECHNICAL FEATURES

- Telescopic rail system
- Managing low and high number of fiber connections with high capacity
- Limited movability for fiber cables and cable safety with glands
- Fiber optic guidance tubes to protect and direct the fiber cables to the splice cassettes
- Easy installation and access
- Cable management for minimum cable bending inside the panel
- 35mm fiber bending bracket control
- PG16 Glands (optionally PG21)
- Compliance with all types of adapters (SC, FC, ST, LC etc.)



## TECHNICAL DETAILS

- Capacity: 3U, 48 / 72 ports
- Maximum Capacity: 144 ports
- Dimensions: (19") W=482mm x D=240mm x 3U (H=133 mm)
- Material: Carbon Steel
- Weight: 6,2 kg
- Color: RAL 7035 Light Grey or RAL 9005 Black

## SET CONTENTS

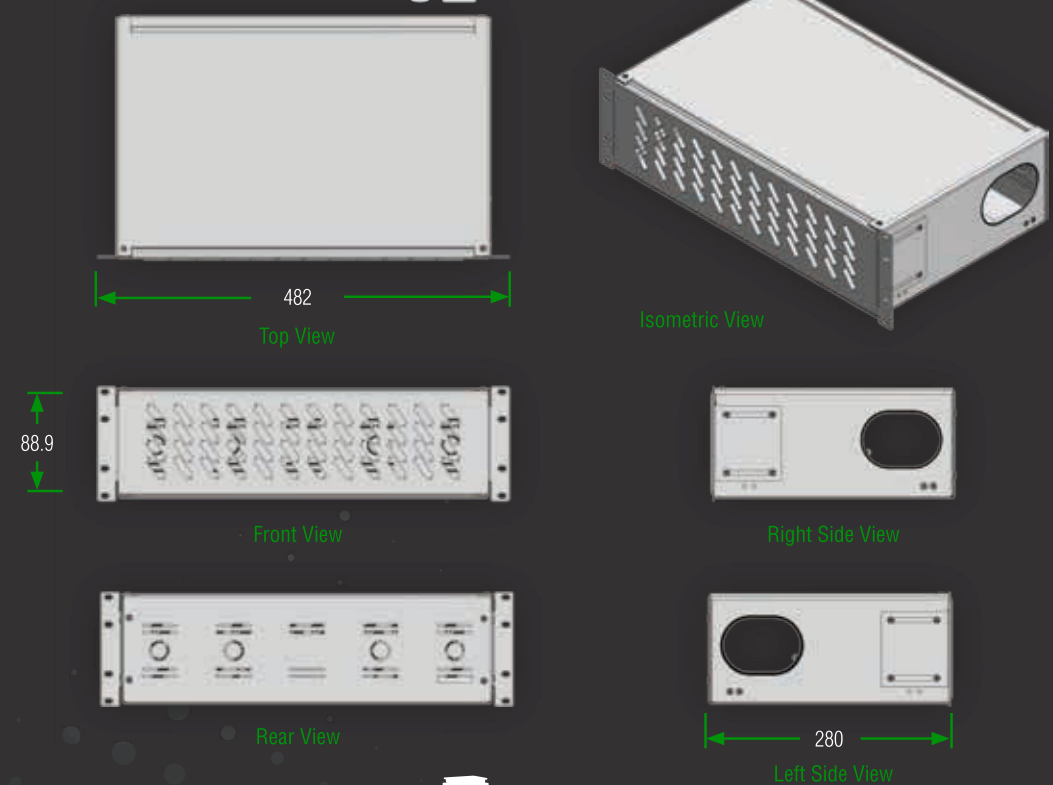
- Self-adhesive organizer 5 pcs
- M5 splice cassette nut 1 pcs
- M6 screw and nut set (4 pcs) 1 set
- 50cm spiral tube 1 pcs
- 2,5 x 100mm cable tie 5 pcs

## INSTALLATION AREAS

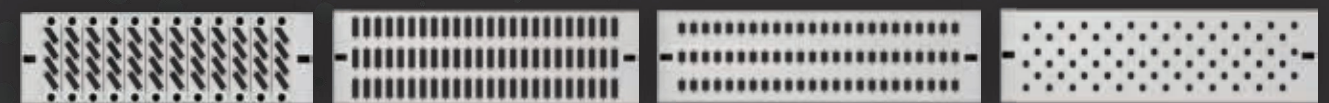
LAN & WAN projects, FTTx installations and Data Centers



Technical Drawing



Port Options



Removable Port Panel  
48 SC Duplex or 48 LC Quad Vertical  
72 SC Duplex or 72 LC Quad Vertical  
72 LC Duplex or 72 E2000 Simplex or 72 SC Simplex  
72 ST or 72 FC (D-hole)

Given port numbers are based on the connector numbers.

Product Code	3U R TYPE FIBER OPTIC TERMINATION PANELS						Logistics		
	(U)	Port	Width W	Depth D	Height H	Net Weight (kg)	Width	Depth	Height
FE.FOR3U48SCD.XX	3U	48	482 mm	280 mm	133 mm	6.2 kg	510 mm	300 mm	155 mm
FE.FOR3U48SCS.XX	3U	48	482 mm	280 mm	133 mm	6.2 kg	510 mm	300 mm	155 mm
FE.FOR3U48ST.XX	3U	48	482 mm	280 mm	133 mm	6.2 kg	510 mm	300 mm	155 mm
FE.FOR3U72SCD.XX	3U	72	482 mm	280 mm	133 mm	6.2 kg	510 mm	300 mm	155 mm
FE.FOR3U72SCS.XX	3U	72	482 mm	280 mm	133 mm	6.2 kg	510 mm	300 mm	155 mm
FE.FOR3U72ST.XX	3U	72	482 mm	280 mm	133 mm	6.2 kg	510 mm	300 mm	155 mm

XX= Color Code, 02 specifies RAL7035 Light Grey / 01 specifies RAL9005 Black. The color codes are specified by the customer on the order.