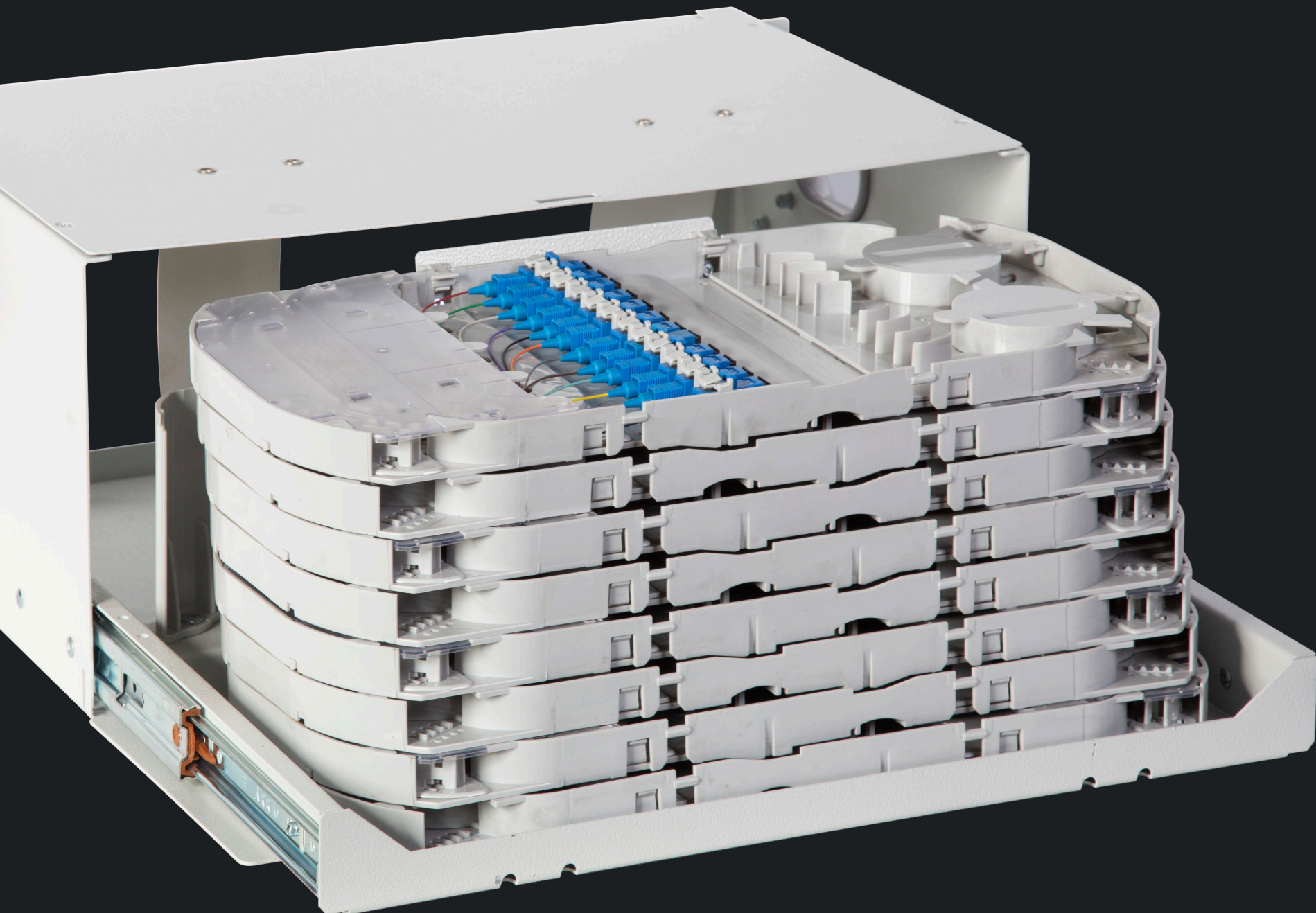




FROG ENGINEERING

OFEB FIBER OPTIC TERMINATION PANELS

OFEB Fiber Optic Termination Panels are multifunctional units belonging to the physical fiber management system, developed to protect and organize the messy cable system and that eases the transfer thanks to the telescopic rails. **Front and rear mounting brackets for added flexibility**



OFEB 2U



OFEB 3U



OFEB 4U

In accordance with ITU-T L.51 recommendations for the installation of optical elements in passive nodes.
Compliant with ITU-T L.202 (old L.50) describing general ODFs requirements in a central office.
Grounding in accordance with recommendation ITU-T K.11
All plastic elements in compliance with UL94 (LSZH = V-0)
OFEB family available in 1RU, 2RU, 3RU and 4RU



TECHNICAL FEATURES

- Modular structure designed for 19" and 21" ETSI optical distribution panels
- Telescopic rail system
- Outstanding cable management with maximum fiber optic termination availability
- 2 x12 Port splice cassette.
- Compatible adapters (SC/LC) 12/24/48 Ports
- Minimum cable movement
- Fiber optic tray with 12/24/48 ports capacity
- Access to the panel on the sides
- Nonflammable splice cassettes
- SC, FC, ST, MTRJ, ...etc. modules



TECHNICAL DETAILS

- Capacity: 1U 12/24/48 ports
- Maximum Capacity: 48 ports
- Dimensions: (19") W=482mm D=280mm H=1U(44.5mm)
- Material: Carbon Steel
- Weight: 4.6kg (loaded)
- Color: RAL 7035 Light Grey or RAL 9005 Black

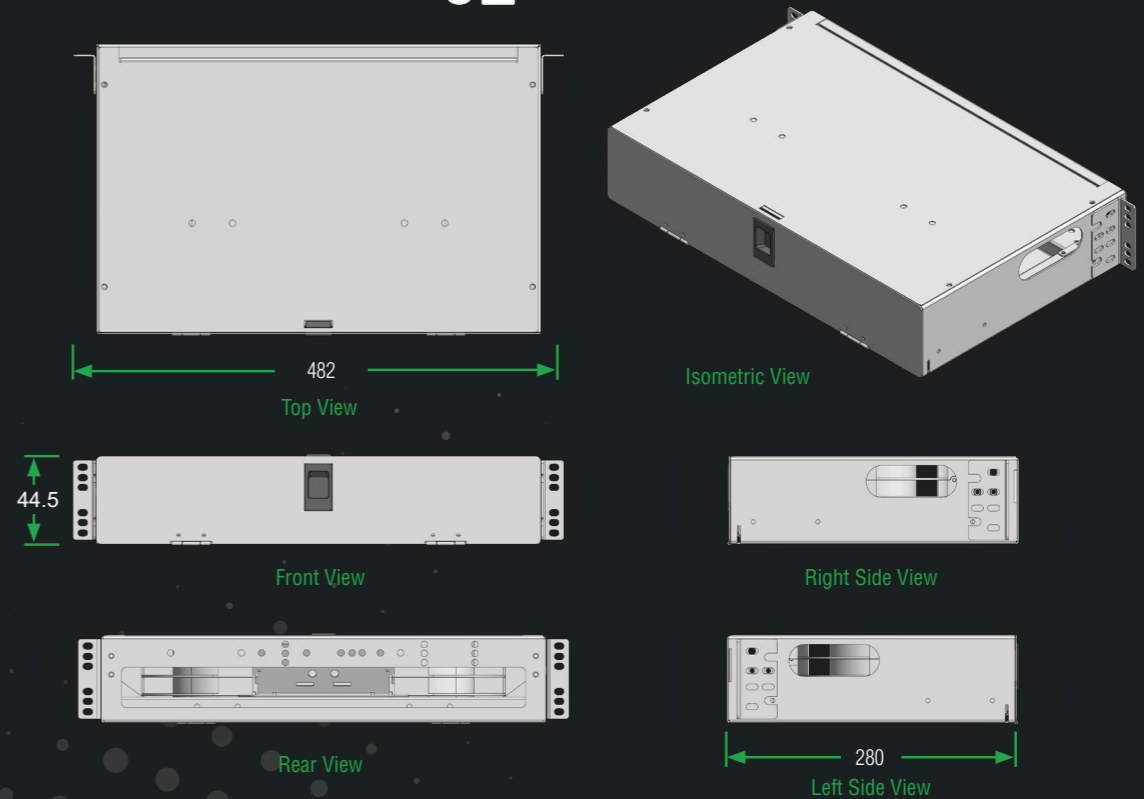
SET CONTENTS

- 1U 21" ETSI converter side lugs 2 pcs
- M6 screw and nut set (4 pcs) 1 set
- Tray support wedge 1 pcs
- Bend control 1 pcs
- U-Link Connector Adapter SC (Holder) 24/48 pcs
- Splice cassette 2 pcs

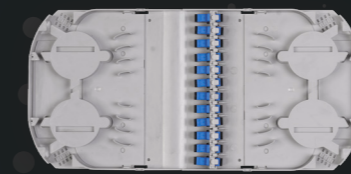
INSTALLATION AREAS

LAN-WAN projects, FTTX installations and Data Centers

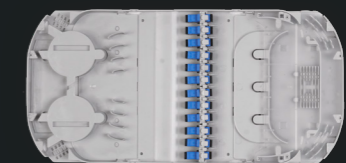
Technical Drawing



Port Options



2 X Patch & Patch 12 Sc Adapter Holder



2 X Splice & Patch 12 Sc Adapter Holder

Given port numbers are based on the connector numbers.

Product Code	2U OFEB FIBER OPTIC TERMINATION PANELS						Logistics		
	(U)	Port	Width W	Depth D	Height H	Net Weight (kg)	Width	Depth	Height
FE.OFEB2U24.SCS.02_PS	1U	24	482 mm	280 mm	44.5 mm	4.6 kg	510 mm	300 mm	65 mm
FE.OFEB2U24.SCS.02_PP	1U	24	482 mm	280 mm	44.5 mm	4.6 kg	510 mm	300 mm	65 mm

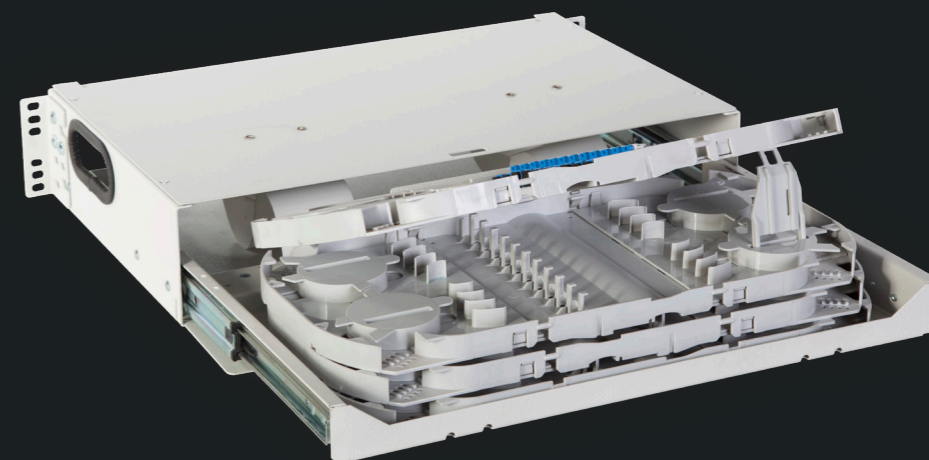
XX= Color Code, 02 specifies RAL 7035 Light Grey / 01 Black RAL 9005 Black. The color codes are specified by the customer on the order.

PS at the end of the code represents Splice & Patch cassette while PP represent Patch & Patch cassette.



FROG ENGINEERING

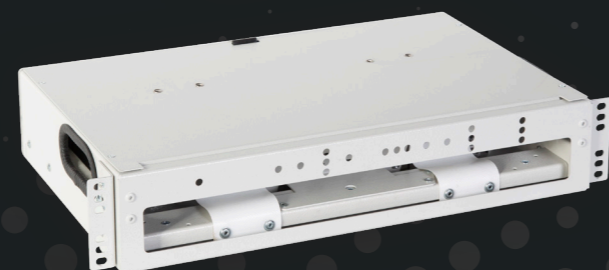
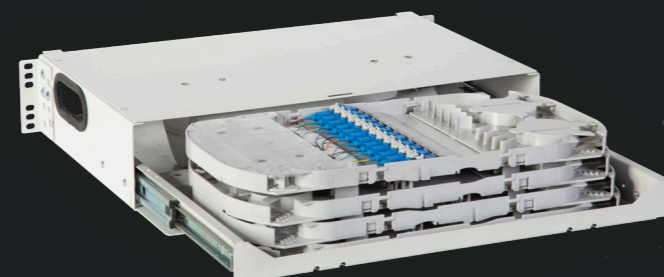
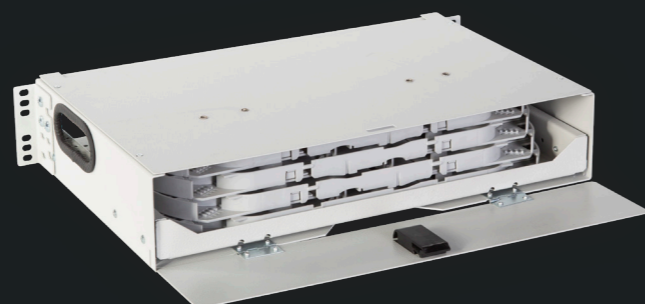
2U OFEB FIBER OPTIC TERMINATION PANELS



Technical Drawing

TECHNICAL FEATURES

- Modular structure designed for 19" and 21" ETSI optical distribution panels
- Telescopic rail system
- Outstanding cable management with maximum fiber optic termination availability
- 4 x12 Port splice cassette.
- Compatible adapters (SC/LC) 48/96 Ports
- Minimum cable movement
- Fiber optic tray with 12 ports capacity
- Access to the panel on the sides
- Nonflammable splice cassettes
- SC, FC, ST, MTRJ, ...etc. modules



TECHNICAL DETAILS

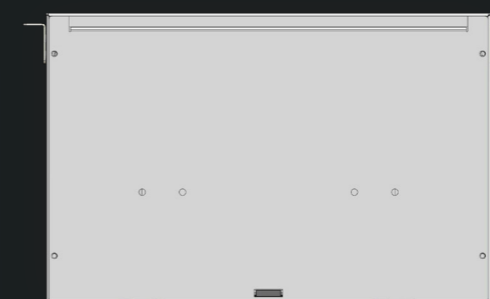
- Capacity: 2U 48/96 ports
- Maximum Capacity: 96 ports
- Dimensions: (19") W=482mm D=280mm H=2U(88.9mm)
- Material: Carbon Steel
- Weight: 7.2kg (loaded)
- Color: RAL 7035 Light Grey or RAL 9005 Black

SET CONTENTS

- 2U 21" ETSI converter side lugs 2 pcs
- M6 screw and nut set (4 pcs) 1 set
- Tray support wedge 1 pcs
- Bend control 1 pcs
- U-Link Connector Adapter SC (Holder) 48 pcs
- Splice cassette 4 pcs

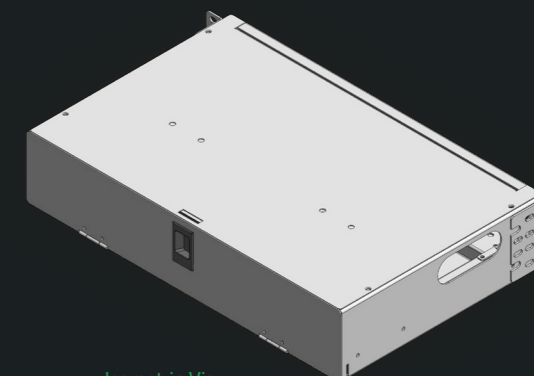
INSTALLATION AREAS

LAN-WAN projects, FTTX installations and Data Centers



482

Top View

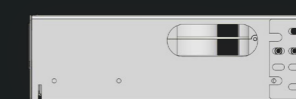


Isometric View

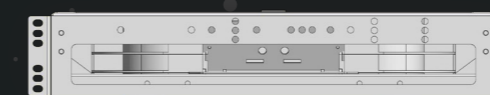


88.9

Front View



Right Side View



Rear View

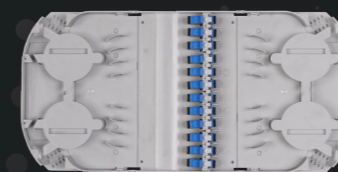


Left Side View

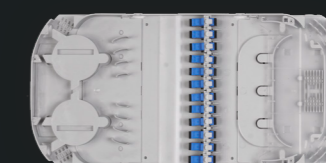
280



Port Options



4 X Patch & Patch 12 Sc Adapter Holder



4 X Splice & Patch 12 Sc Adapter Holder

Given port numbers are based on the connector numbers.

Product Code	2U OFEB FIBER OPTIC TERMINATION PANELS						Logistics		
	(U)	Port	Width W	Depth D	Height H	Net Weight (kg)	Width	Depth	Height
FE.OFEB2U48.SCS.02_PS	2U	48	482 mm	280 mm	88.9 mm	7.2 kg	510 mm	300 mm	100 mm
FE.OFEB2U48.SCS.02_PP	2U	48	482 mm	280 mm	88.9 mm	7.2 kg	510 mm	300 mm	100 mm

XX= Color Code, 02 specifies RAL 7035 Light Grey / 01 Black RAL 9005 Black. The color codes are specified by the customer on the order.

PS at the end of the code represents Splice & Patch cassette while PP represent Patch & Patch cassette.

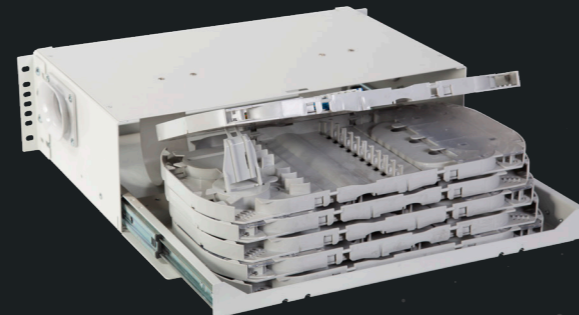


FROG ENGINEERING

3U OFEB FIBER OPTIC TERMINATION PANELS

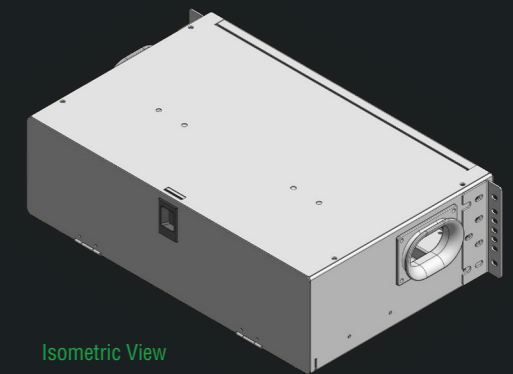


Technical Drawing



482

Top View



Isometric View



133.35

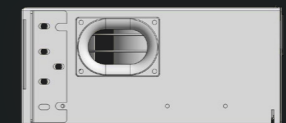
Front View



Right Side View



Rear View



280

Left Side View

TECHNICAL FEATURES

- Modular structure designed for 19" and 21" ETSI optical distribution panels
- Telescopic rail system
- Outstanding cable management with maximum fiber optic termination availability
- 6x12 Port splice cassette.
- Compatible adapters (SC/LC) 72 Ports
- Minimum cable movement
- Fiber optic tray with 12 ports capacity
- Access to the panel on the sides
- Nonflammable splice cassettes
- SC, FC, ST, MTRJ, ...etc. modules

TECHNICAL DETAILS

- Capacity: 3U 72/144 ports
- Maximum Capacity: 144 ports
- Dimensions: (19") W=482mm D=280mm H=3U(133 mm)
- Material: Carbon Steel
- Weight: 9 kg (loaded)
- Color: RAL 7035 Light Grey or RAL 9005 Black

SET CONTENTS

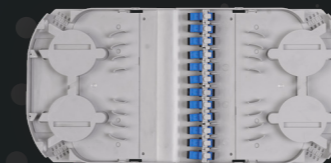
- 2U 21" ETSI converter side lugs 2 pcs
- M6 screw and nut set (4 pcs) 1 set
- Tray support wedge 1 pcs
- Bend control 2 pcs
- U-Link Connector Adapter SC (Holder) 48 pcs
- Splice cassette 6 pcs
- Radius PVC cable entry 2 pcs

INSTALLATION AREAS

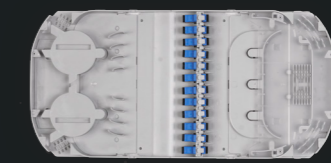
LAN-WAN projects, FTTX installations and Data Centers



Port Options



6 X Patch & Patch
12 Sc Adapter Holder



6 X Splice & Patch
12 Sc Adapter Holder

Given port numbers are based on the connector numbers.

Product Code	2U OFEB FIBER OPTIC TERMINATION PANELS						Logistics		
	(U)	Port	Width W	Depth D	Height H	Net Weight (kg)	Width	Depth	Height
FE.OFEB3U72.SCS.02_PS	3U	72	482 mm	280 mm	133.35 mm	9.0 kg	510 mm	300 mm	150 mm
FE.OFEB3U72.SCS.02_PP	3U	72	482 mm	280 mm	133.35 mm	9.0 kg	510 mm	300 mm	150 mm

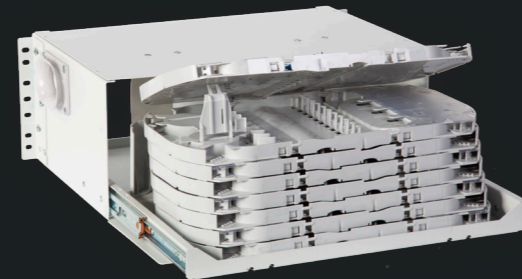
XX= Color Code, 02 specifies RAL 7035 Light Grey / 01 Black RAL 9005 Black. The color codes are specified by the customer on the order.

PS at the end of the code represents Splice & Patch cassette while PP represent Patch & Patch cassette.



FROG ENGINEERING

4U OFEB FIBER OPTIC TERMINATION PANELS



TECHNICAL FEATURES

- Modular structure designed for 19" and 21" ETSI optical distribution panels
- Telescopic rail system
- Outstanding cable management with maximum fiber optic termination availability
- 8x12 Port splice cassette.
- Compatible adapters (SC/LC) 96 Ports
- Minimum cable movement
- Fiber optic tray with 12 ports capacity
- Access to the panel on the sides
- Nonflammable splice cassettes
- SC, FC, ST, MTRJ, ...etc. modules

TECHNICAL DETAILS

- Capacity: 4U, 96/192 ports
- Maximum Capacity: 192 ports
- Dimensions: (19") W=482mm D=280mm H=3U(133 mm)
- Material: Carbon Steel
- Weight: 9 kg (loaded)
- Color: RAL 7035 Light Grey or RAL 9005 Black

INSTALLATION AREAS

LAN-WAN projects, FTTX installations and Data Centers

SET CONTENTS

- 2U 21" ETSI converter side lugs 2 pcs
- M6 screw and nut set (4 pcs) 1 set
- Tray support wedge 1 pcs
- Bend control 2 pcs
- U-Link Connector Adapter SC (Holder) 96 pcs
- Splice cassette 8 pcs
- Radius PVC cable entry 2 pcs

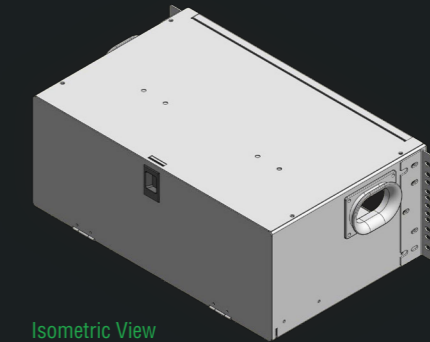


Technical Drawing



482

Top View



Isometric View



88.9

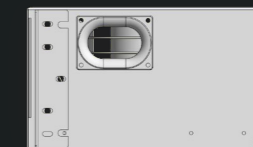
Front View



Right Side View



Rear View

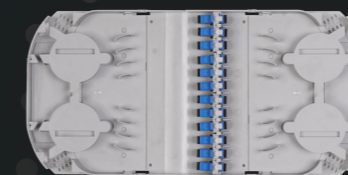


280

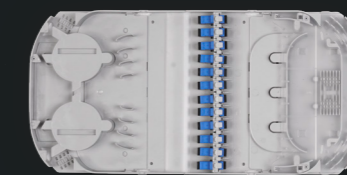
Left Side View



Port Options



8 X Patch & Patch
12 Sc Adapter Holder



8 X Splice & Patch
12 Sc Adapter Holder

Given port numbers are based on the connector numbers.

Product Code	2U OFEB FIBER OPTIC TERMINATION PANELS						Logistics		
	(U)	Port	Width W	Depth D	Height H	Net Weight (kg)	Width	Depth	Height
FE.OFEB4U96.SCS.02_PS	4U	96	482 mm	280 mm	177.8 mm	10.5 kg	510 mm	300 mm	200 mm
FE.OFEB4U96.SCS.02_PP	4U	96	482 mm	280 mm	177.8 mm	10.5 kg	510 mm	300 mm	200 mm

XX= Color Code, 02 specifies RAL 7035 Light Grey / 01 Black RAL 9005 Black. The color codes are specified by the customer on the order.

PS at the end of the code represents Splice & Patch cassette while PP represent Patch & Patch cassette.