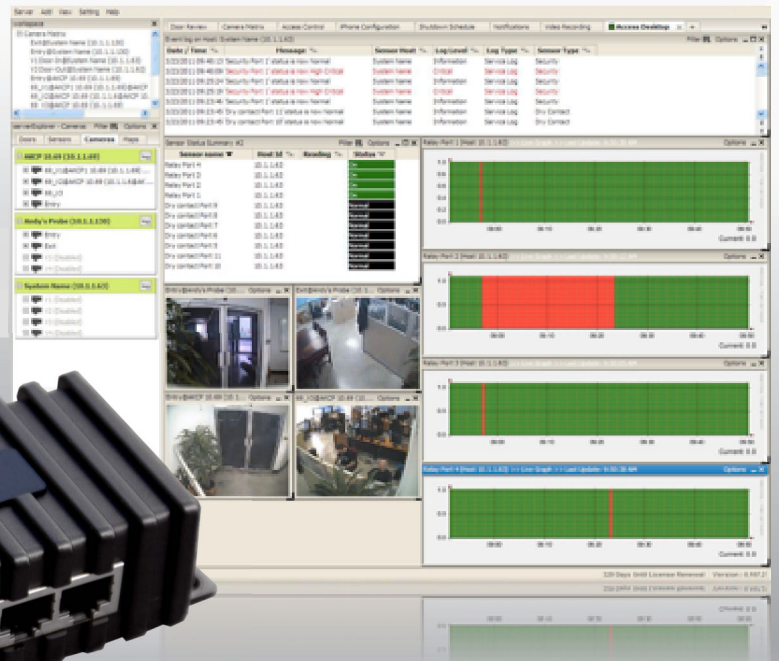
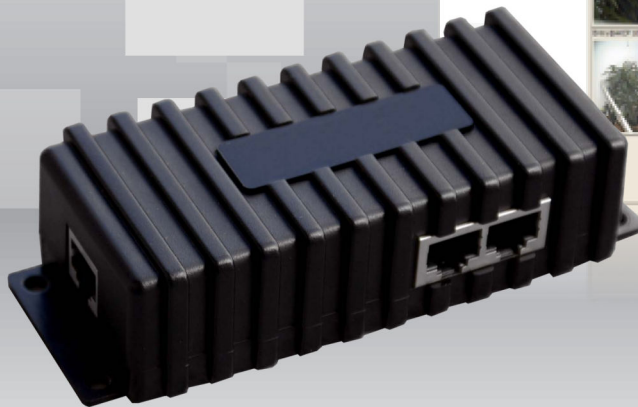


IO-Digital8 Sensor - IO-DCXXX



IO-Digital8 Sensor

The IO-digital8 sensor adds 8 dry contacts to the securityProbe or expansion module base unit. With 8 ALARM/NORMAL indication in the securityProbe 5E web interface it provides instant notification for changes of status.

The sensor can be mounted on a wall by your alarm panel, or using our DIN rail clips can be DIN rail mounted. A standard CAT5 cable connects the IO-digital8 sensor to the intelligent sensor port.

There are two versions of the IO-digital8 depending on your requirements.

The first version has a single RJ45 connector at one end and 8 x 2-pin dry contact connectors along one side. The second unit also has a single RJ45 connector at one end but the 8 x 2-pin dry contact connectors are replaced by two RJ45 connectors, each compatible with our 4-dry contact cable (supplied).



The dry contacts can be configured as inputs or outputs and the IO-digital8. The contacts are user definable so it can be used to detect many different inputs, such as UPS status, security systems, alarm panels or air conditioning status.

Typical Applications

- SNMP interface for alarm/normal status.
- SNMP traps sent when critical.
- SNMP polling via get command.
- When an alarm condition is activated the description and location of the fault can be sent via email, SMS, MMS, Skype, phone calls and other advanced notifications from the securityProbe5E's web interface.
- Each of the 8 dry contacts on the IO-digital8 sensor can be configured as outputs, and sink current up to 20mA.

IO-Digital8 Sensor's Main Features

- **Powered by the securityProbe5E. No additional power needed.**
- **securityProbe5E autodetects the presence of each dry contact on the IO-Digital8**
- **Connect up to 8 IO-digital8 sensors per each securityProbe 5E main unit and E-Sensor8 expansion modules for a total of 64 dry contacts per box.**
- **Full autosense including disconnect alarm**

Technical Specifications

Measurement Range : Alarm or Normal

Communications Cable : RJ45 jack to sensor using UTP Cat 5 wire, Maximum extension cable length 305m (1000 ft.) with approved low capacitance shielded cable or UTP.

Sensor Type : Open / Closed or cycles contact switches

Input Voltage Range : 0 to 5 volts on each of the 8 dry contacts

Normal State Input Voltage : (0-5 Volts) is settable under software on each of the 8 dry contacts

Normally open, normally closed is settable under software on each of the 8 dry contacts

Current Range : Can sink up to 20 mAmps on each of the 8 dry contacts

Measurement Rate : multiple readings every second

Dimensions : Length 13.20 cm x Width 5.38 cm x Height: 3.40 cm

Weight (Approx) : 120 grams without cable